



Video Wall Solutions

HIKVISION[®]

Professional Ultra HD TV Wall Solutions

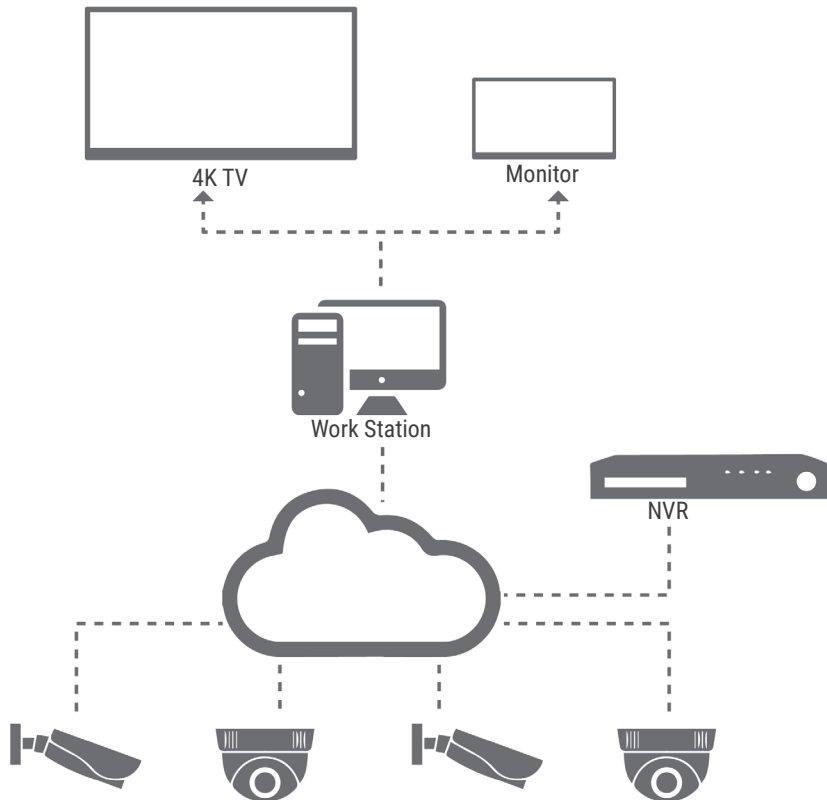
Supports 4K signal inputs and outputs:
Up to 12 MP IP camera signal and 8 MP PC signal inputs



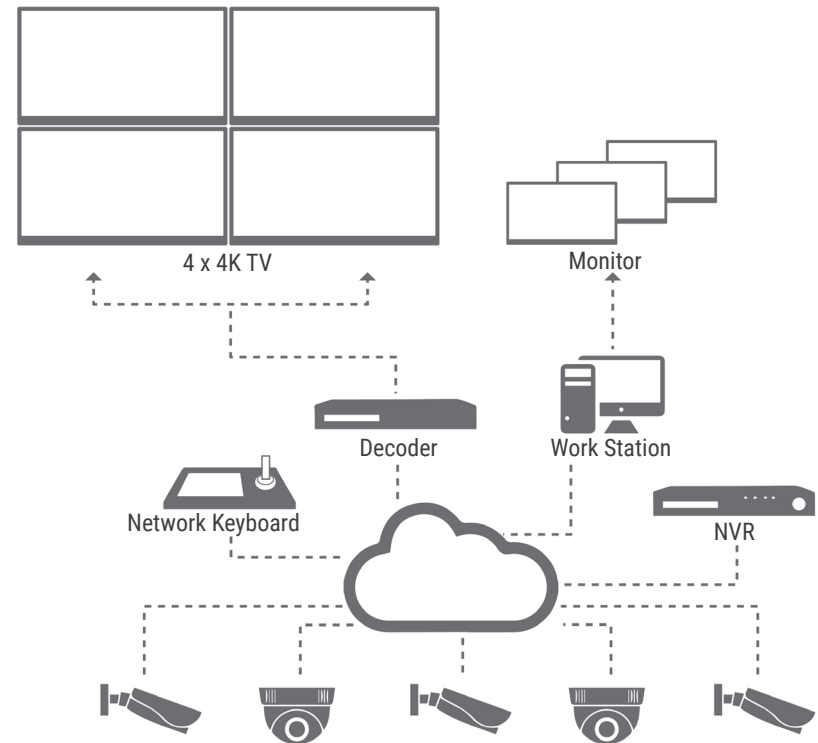
Simple and Scalable

Easy to deploy, maintain, and scale to meet your requirements and grow from small to large, from economic to high-end.

For small control room



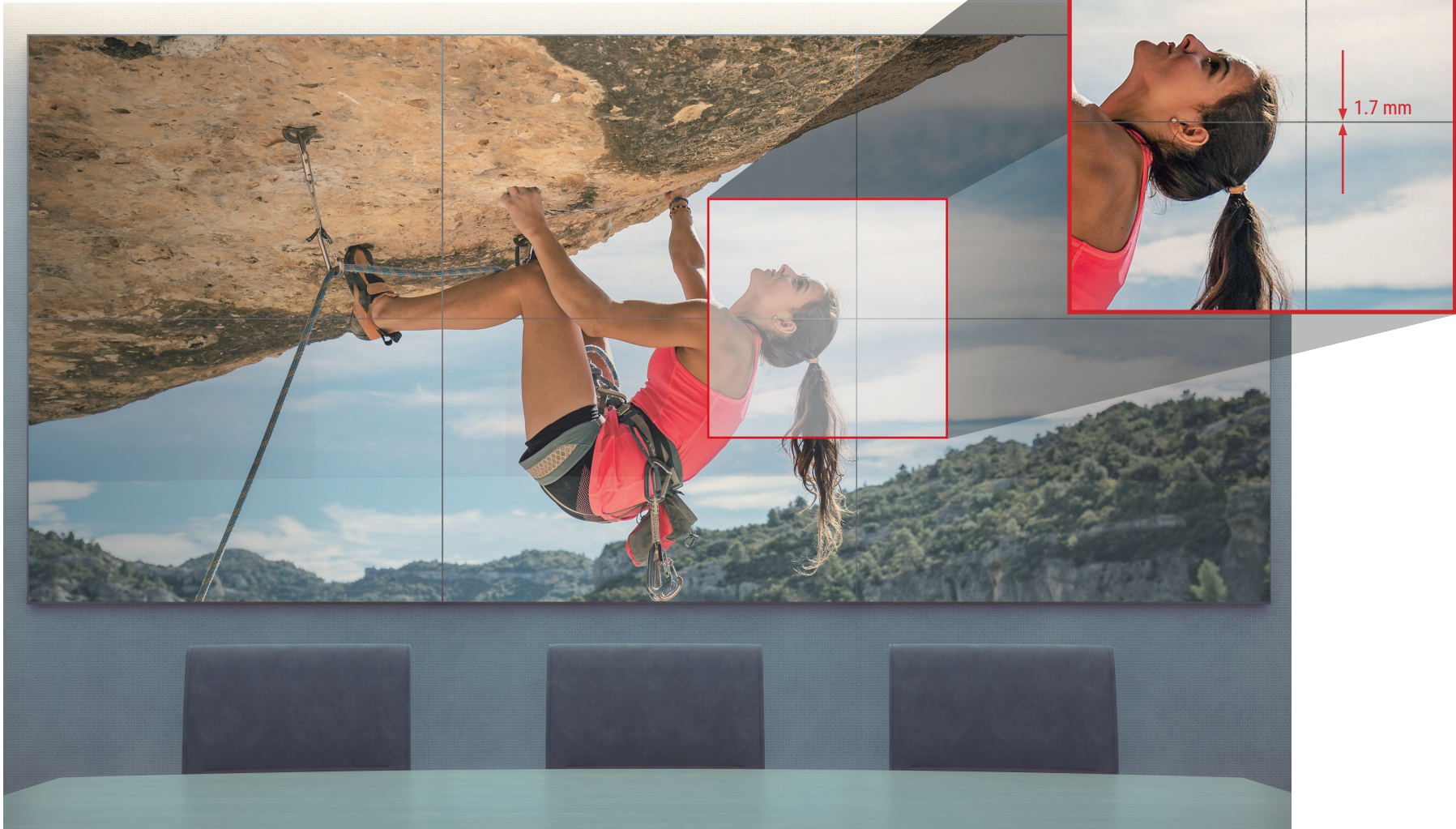
For medium control room



Ultra-Narrow Bezel LCD Display Design

World's slimmest bezel-to-bezel video wall provides customer amazing viewing experience.

Ultra-narrow bezel LCD displays



Multiple Signal Compatibility

High compatibility with IP signals, analog and analog HD, and PC signals.



Dp



DVI Dual-Link



IP / RS232



DVI



VGA



SDI



YPbPr



HDMI



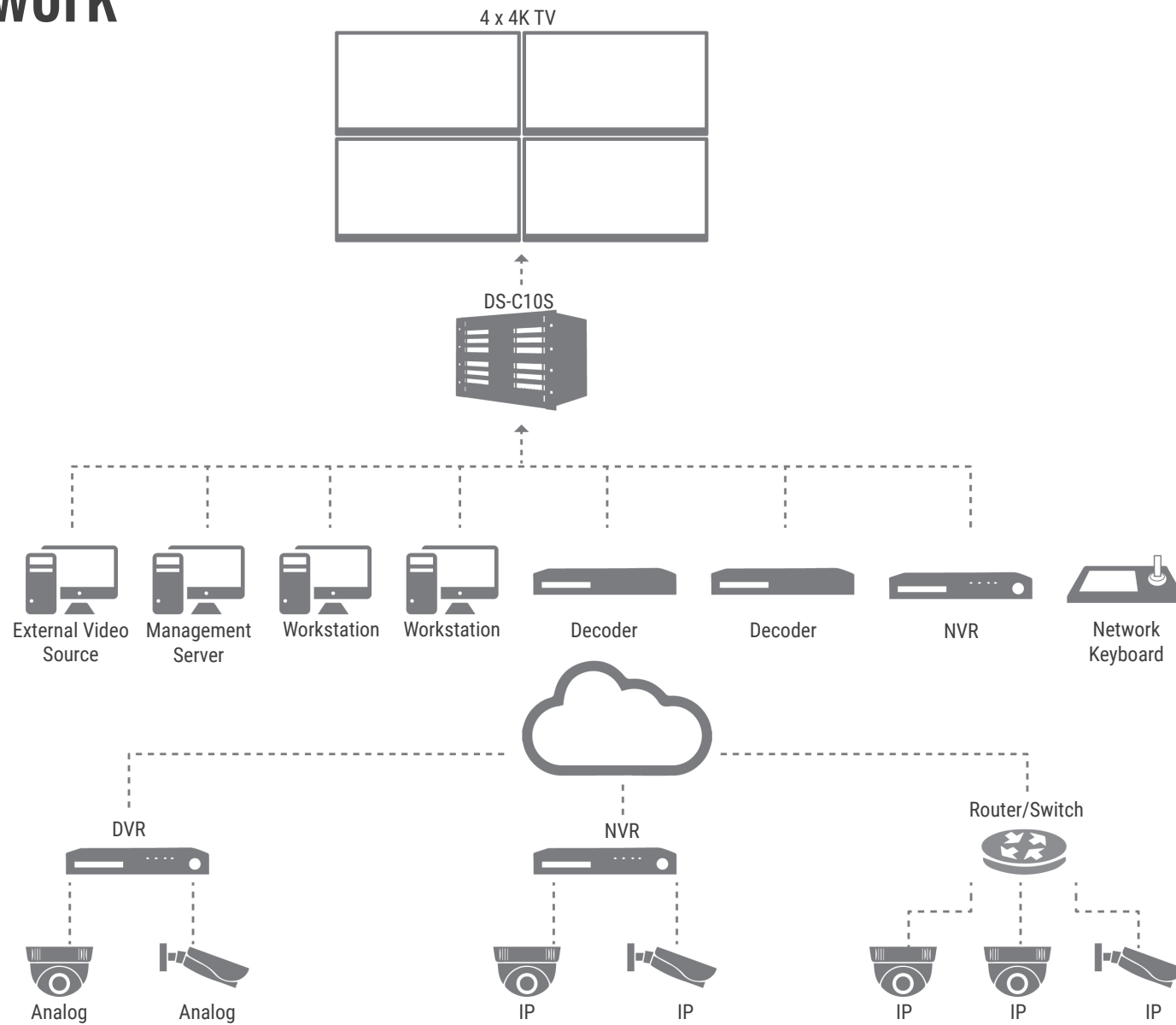
BNC



HD-TVI

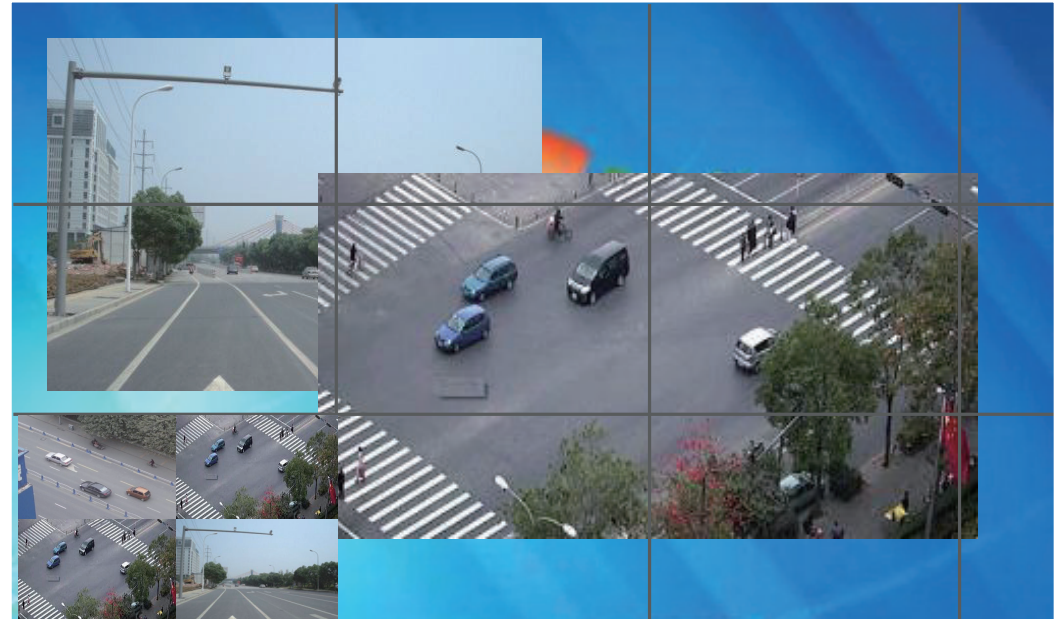


Ultra-Narrow Bezel LCD Framework



Advanced Features

- Alarm Pop-up
- E-Map
- Open New Windows and Roaming
- Window Splicing
- Window Division
- Auto-Switch



Alarm POP-Up Window on Video Wall

When an event occurs, videos pop up on video wall, multiple alarms and events signal detection, video loss, line crossing, and more

- More details of alarm events
- Quick sharing of alarm video with video alarm pop-up windows on video wall for more expedited responses



Alarm Detected!



Alarm pops up onto video wall



E-Map on Video Wall

Display E-Maps on the video wall, with easy-to-find hot spots and physical locations

- Improved situational awareness with E-Map, alarm information, & alarm video displayed on an expensive video wall



Camera Hot Spot

Show a camera's location on map



Alarm Input Hotspot

Show alarm location on the map and retrieve alarm info



Live View

Go to Live View from the hot spot



Opening New Window and Roaming

Open a new window to check some channels and click-and-drag a window to any position on the video wall

- New Windows opening to display key video in the screen without turning off signals already on the video wall



Check Details



Open a new window in any position



Up to 8 windows overlaid
Window roaming via click-and-drag



Window Splicing

One screen cannot display every detail for ultra-high resolution images, but window-splicing can expand to unlimited resolution display more details, and provide more informations.

- Easily display 4K or even higher resolution video on the video wall for more detailed monitoring



Windows Splicing

Expand to unlimited resolution
Up to 16-channels on-screen



Window Division

When a larger number of channels is needed to display across limited screens, window division expands limitations of the physical screen. This feature divides one physical screen into several divisions to take full advantage of your screens.

- More camera channels can be displayed on the video wall using window division



Window division

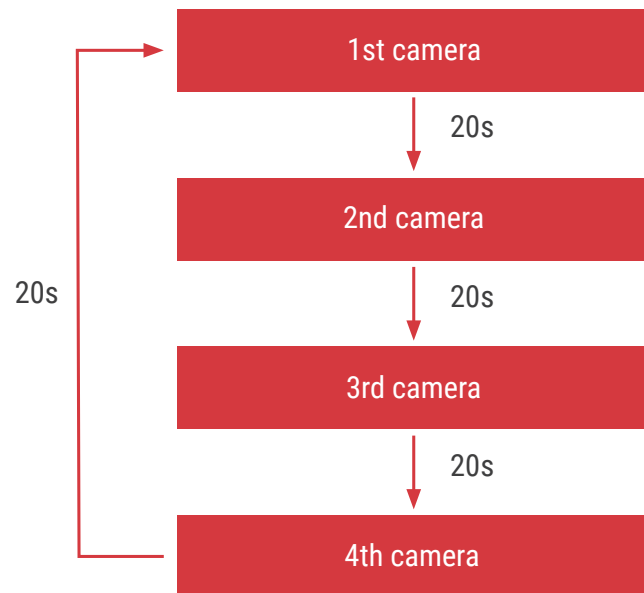
One output displays more channels up to 36 divisions Main or Sub-stream



Auto-Switch Decoding Output

To take full advantage of your screen, use one window to display several channels in sequence.

- Automate video switching on a single monitor for more efficient use of all screens



Product Showcase



DS-69xxUDI
Standalone Decoder

- Up to 12 MP decoding (20fps)
- 16ch 12 MP@20fps, 32ch 8 MP, 48ch 5 MP, 80ch 3 MP or 128ch 1080p per each DS-6916UDI
- Splicing (up to 4x4), roaming and multi-layer
- UP to 8 MP HDMI output



DS-C10S-xxE
TV Wall Controller

- Blade server style with input/output board and decoding board (optional).
- Decoding board up to 8 MP low fps
- 2ch 8 MP (low fps), 2ch 6 MP/ 5 MP, 8ch 1080p, 16ch 720p, 32ch D1 per decoding board
- Support splicing, roaming and multi-layer (≤ 6)
- Up to 8 MP video input resolution.
- Up to 1080p video output per screen
- UP to 16ch x 8 MP splicing



DS-1100KI
Keyboard

- Network keyboard
- 7" resistive touchscreen for configuration and operation
- HDMI, DVI output
- Audio input and output
- Supports Live view
- TV wall control, screen joint, cross-window roaming
- External video play
- Friendly and convenient UI
- Shortcut operations for camera and screen control



DS-1600KI
Network Keyboard

- 10.1" capacitive touch screen
- Detachable design of the touchscreen and joystick
- Wired and WiFi network connection
- 2-ch 1080P decoding and up to 16-division windows display
- PTZ control, setting and calling preset, patrol and pattern
- DVI / HDMI output to the monitor

Product Showcase



DS-D2046NH-E
46" LED Backlight

- 46" LED Backlight
- Resolution 1920x1080
- Bezel Width 1.7mm
- Contrast: 4500:1
- Brightness: 700cd/m2
- Color: 16.7M
- Input: VGAx1, DVIx1, BNCx1, YPbPrx1, HDMIx1, USBx1
- Output: VGAx1, DVIx1, BNCx2



DS-D2055NH-E/G
55" LED Backlight

- 55" LED Backlight
- Resolution 1920x1080
- Bezel Width 1.8mm
- Contrast: 4000:1
- Brightness: ≥ 500 cd/m2
- Color: 10Bit (D), 1.06 Billion Colors
- Input: VGAx1, DVIx1, BNCx1, YPbPrx1, HDMIx1
- Output: VGAx1, DVIx1, BNCx2

Hikvision USA Inc.

18639 Railroad Street
City of Industry, CA 91748
Email: sales.usa@hikvision.com

Hikvision Canada Inc.

4848 Levy Street
Saint-Laurent, Quebec H4R 2P1
Email: sales.canada@hikvision.com

Contact Information

Toll-Free: +1 866-200-6690 (U.S. and Canada)
Phone: +1 909-895-0400
www.hikvision.com

Connect with us:     

©2018 Hikvision USA Inc. and Hikvision Canada Inc. All rights reserved. Hikvision is a registered trademark of Hikvision Digital Technology Co., Ltd. in the US, Canada and other countries. All other trademarks, service marks, and product or service names are trademarks or registered trademarks of their respective owners. Product specifications and availability are subject to change without notice.