

How to Recover the DVR Password on Local GUI

Purpose:

This document guide user to recover the password on DVR on local GUI.

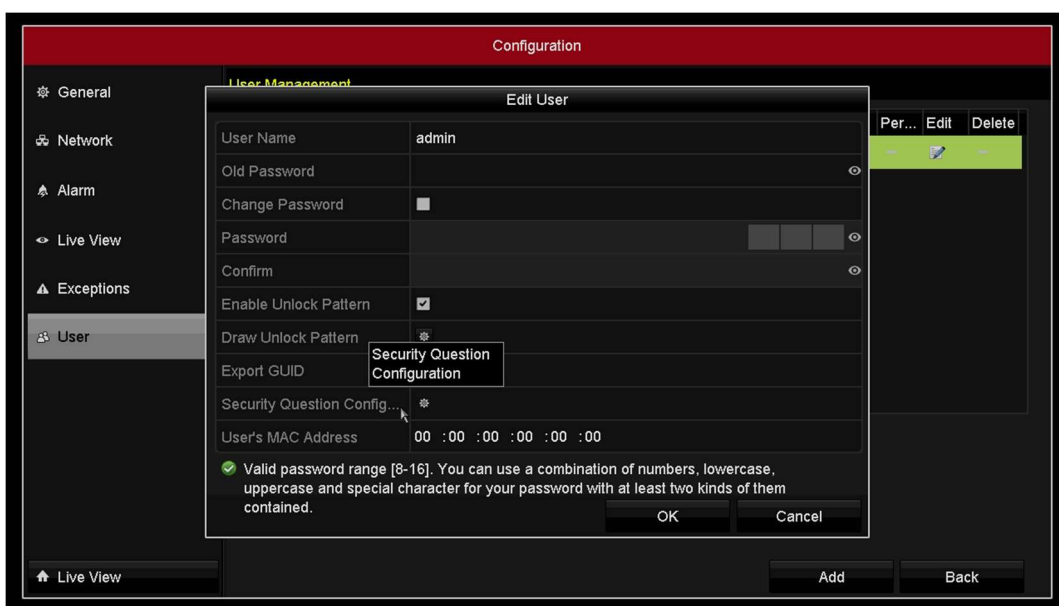
Note:

1. From v3.5.35 DVR support recover the password by answering the security questions.
2. There are two ways to recover the password by security questions and by GUID file

How to recover password by answering the security questions

Steps:

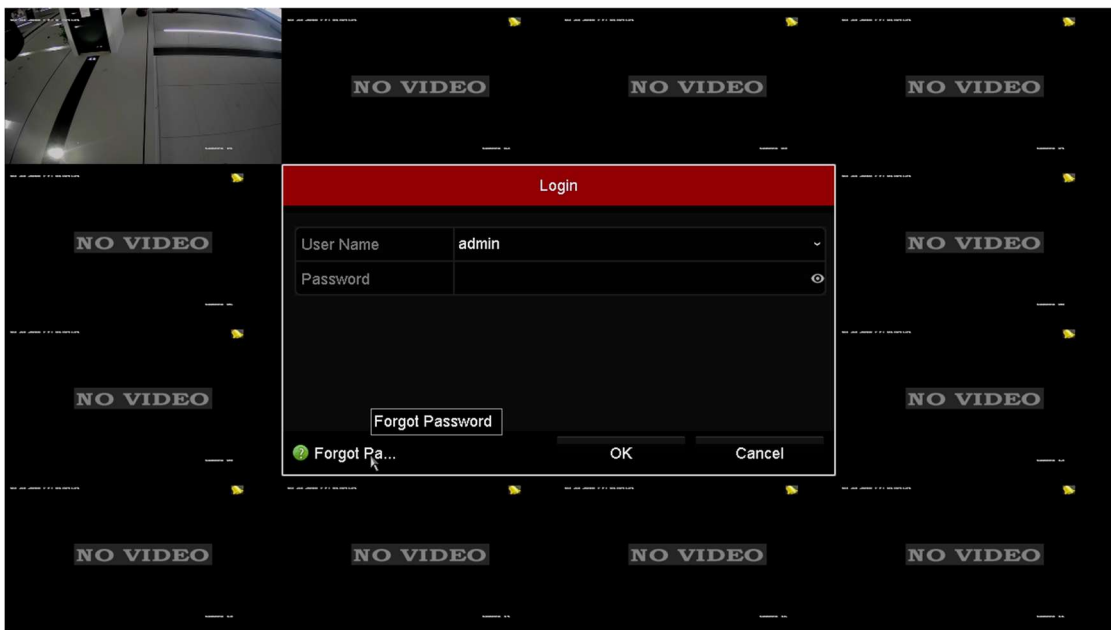
1. Set the security questions first. The security questions can be configured through configuration->user or wizard.
2. Input the old password of admin, the click the security question configuration.



3. Set the answers of each question, note each question should be different.



4. Click the "forgot password" button in the login page.



5. Choose verify by security question and input the answers you set before to recover password.



First Choice for Security Professionals

HIKVISION Technical Support