

With ColorVu, You'll Enjoy

Images shot by ColorVu camera were with supplementary light OFF

True Color Information

- Accurate color rendering
- Excellent performance in low-light environments



Unable to identify color



Accurate color

More Details

- Clearly captured color information
- Richer details compared to black and white imaging



Lost details



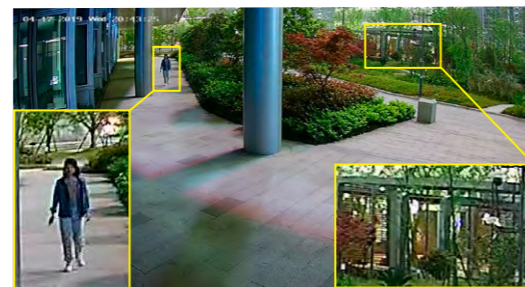
Rich color-related details

Better Visual Experience

- Balanced brightness
- F1.0 super aperture and advanced sensor guarantee realistic rendering



Blurry



Sharp

24/7 Colorful Imaging

View in Color,
Even in Darkness

ColorVu
Turbo HD Camera



Headquarters
No.555 Qianmo Road, Binjiang District,
Hangzhou 310051, China
T +86-571-8807-5998
overseasbusiness@hikvision.com



HIKVISION
www.hikvision.com

Combining Great Technologies for Greater Image Quality



DVR

 <p>DS-7204HUHI-K1/2 4-Channel DVR</p> <ul style="list-style-type: none"> • HDTVI / AHD / CVI / CVBS / IP Video Inputs • H.265Pro+ / H.265Pro / H.265 • 5 MP @ 12 fps (CH1: supports 8 MP @ 8fps) • Maximum 8 IP Camera Inputs (up to 8 MP) 	 <p>DS-7208HUHI-K1/2 8-Channel DVR</p> <ul style="list-style-type: none"> • HDTVI / AHD / CVI / CVBS / IP Video Inputs • H.265Pro+ / H.265Pro / H.265 • 8 MP @ 8fps / 5 MP @ 12 fps • Maximum 16 IP Camera Inputs (up to 8 MP) 	 <p>DS-7216HUHI-K2 16-Channel DVR</p> <ul style="list-style-type: none"> • HDTVI / AHD / CVI / CVBS / IP video inputs • H.265Pro+ / H.265Pro / H.265 • 8 MP @ 8fps / 5 MP @ 12 fps • Maximum 32 IP Camera Inputs (up to 8 MP)
 <p>DS-7204HQHI-K1 4-Channel DVR</p> <ul style="list-style-type: none"> • HDTVI / AHD / CVI / CVBS / IP Video Inputs • H.265Pro+ / H.265Pro / H.265 • 4 MP Lite @ 15 fps / 1080p @ 15fps • Maximum 6 IP Camera Inputs (up to 6 MP) 	 <p>DS-7208HQHI-K1/2 8-Channel DVR</p> <ul style="list-style-type: none"> • HDTVI / AHD / CVI / CVBS / IP Video Inputs • H.265Pro+ / H.265Pro / H.265 • 4 MP Lite @ 15 fps / 1080p @ 15fps • Maximum 12 IP Camera Inputs (up to 6 MP) 	 <p>DS-7216HQHI-K1/2 16-Channel DVR</p> <ul style="list-style-type: none"> • HDTVI / AHD / CVI / CVBS / IP Video Inputs • H.265Pro+ / H.265Pro / H.265 • 4 MP Lite @ 15 fps / 1080p @ 15fps • Maximum 24 IP Camera Inputs (up to 6 MP)

ColorVu Camera

Bullet	 <p>DS-2CE10DF3T-F 2 MP ColorVu Mini Bullet Camera</p> <ul style="list-style-type: none"> • 24/7 color imaging with F1.0 aperture • 0.0005 lux • 130 dB true WDR, 3D DNR technology • Smartlight 20 m • IP67 • Metal casing • 2.8, 3.6 or 6 mm lens 	 <p>DS-2CE10DF3T-PF 2 MP ColorVu Mini Bullet Camera</p> <ul style="list-style-type: none"> • 24/7 color imaging with F1.0 aperture • 0.0005 lux • 130 dB true WDR, 3D DNR technology • Smartlight 20 m • IP67 • Plastic casing • 2.8, 3.6 or 6 mm lens 	 <p>DS-2CE12DF3T-F 2 MP ColorVu Bullet Camera</p> <ul style="list-style-type: none"> • 24/7 color imaging with F1.0 aperture • 0.0005 lux • 130 dB true WDR, 3D DNR technology • Smartlight 40 m • IP67 • Metal casing • 2.8, 3.6 or 6 mm lens
	 <p>DS-2CE70DF3T-MF 2 MP ColorVu Turret Camera</p> <ul style="list-style-type: none"> • 24/7 color imaging with F1.0 aperture • 0.0005 lux • 130 dB true WDR, 3D DNR technology • Smartlight 20 m • IP67 • Metal casing • 2.8, 3.6 or 6 mm lens 	 <p>DS-2CE70DF3T-PF 2 MP ColorVu Turret Camera</p> <ul style="list-style-type: none"> • 24/7 color imaging with F1.0 aperture • 0.0005 lux • 130 dB true WDR, 3D DNR technology • Smartlight 20 m • Plastic casing • 2.8, 3.6 or 6 mm lens 	 <p>DS-2CE72DF3T-F 2 MP ColorVu Turret Camera</p> <ul style="list-style-type: none"> • 24/7 color imaging with F1.0 aperture • 0.0005 lux • 130 dB true WDR, 3D DNR technology • Smartlight 40 m • IP67 • Metal camera body, plastic enclosure • 2.8, 3.6 or 6 mm lens

AcuSense DVR

 <p>iDS-7204HUHI-M1(2)/S 4-Channel AcuSense DVR</p> <ul style="list-style-type: none"> • Deep learning-based facial detection or behavior analysis • 1-ch human face capture or 4-ch false alarm reduction • HDTVI / AHD / CVI / CVBS / IP Video Inputs • H.265Pro+ / H.265Pro / H.265 • 5 MP @ 12 fps (CH1: supports 8 MP @ 8fps) • Maximum 8 IP Camera Inputs (up to 8 MP) 	 <p>iDS-7208HUHI-M1(2)/S 8-Channel AcuSense DVR</p> <ul style="list-style-type: none"> • Deep learning-based facial detection or behavior analysis • 1-ch human face capture or 4-ch false alarm reduction • HDTVI / AHD / CVI / CVBS / IP Video Inputs • H.265Pro+ / H.265Pro / H.265 • 8 MP @ 8fps / 5 MP @ 12 fps • Maximum 16 IP Camera Inputs (up to 8 MP) 	 <p>iDS-7204HQHI-M1/S 4-Channel AcuSense DVR</p> <ul style="list-style-type: none"> • Deep learning-based facial detection or behavior analysis • 1-ch human face capture or 2-ch false alarm reduction • HDTVI / AHD / CVI / CVBS / IP Video Inputs • H.265Pro+ / H.265Pro / H.265 • 4 MP Lite @ 15 fps / 1080p @ 15fps • Maximum 6 IP Camera Inputs (up to 6 MP)
 <p>iDS-7208HQHI-M1(2)/S 8-Channel AcuSense DVR</p> <ul style="list-style-type: none"> • Deep learning-based facial detection or behavior analysis • 1-ch human face capture or 4-ch false alarm reduction • HDTVI / AHD / CVI / CVBS / IP Video Inputs • H.265Pro+ / H.265Pro / H.265 • 4 MP Lite @ 15 fps / 1080p @ 15fps • Maximum 12 IP Camera Inputs (up to 6 MP) 	 <p>iDS-7216HQHI-M1(2)/S 16-Channel AcuSense DVR</p> <ul style="list-style-type: none"> • Deep learning-based facial detection or behavior analysis • 1-ch human face capture or 4-ch false alarm reduction • HDTVI / AHD / CVI / CVBS / IP Video Inputs • H.265Pro+ / H.265Pro / H.265 • 4 MP Lite @ 15 fps / 1080p @ 15fps • Maximum 24 IP Camera Inputs (up to 6 MP) 	