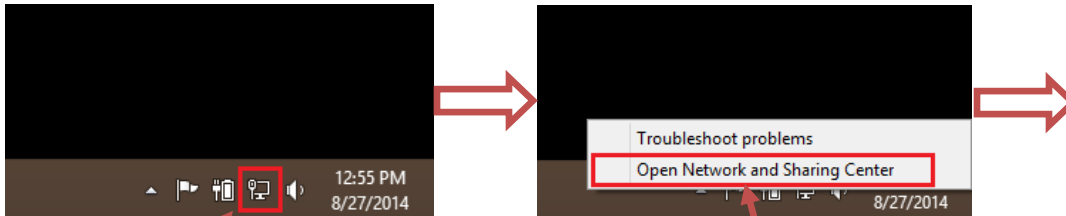


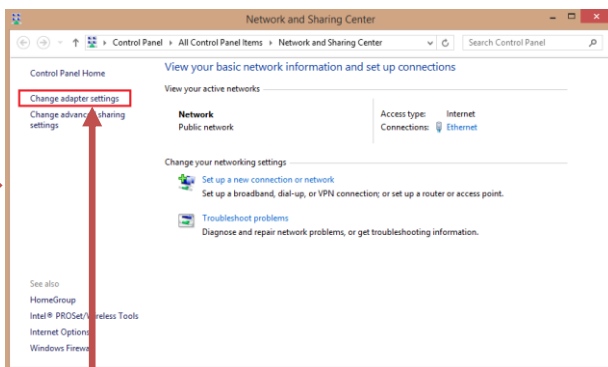
Title:	Change PC's IP ADDRESS				
Date:	8/27/2014	Version:	1.0	Pages	2
Product:	PC Computers				
Action Required:	Information only				

Manually change the IP address of the computer to **192.0.0.128**

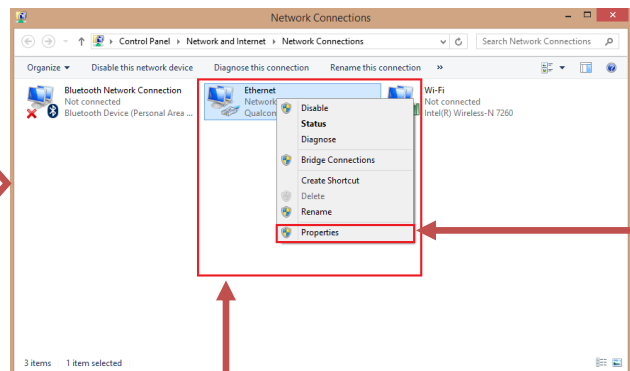


RIGHT-CLICK on
"Network Connections"

CLICK on "Open Network
and Sharing Center"



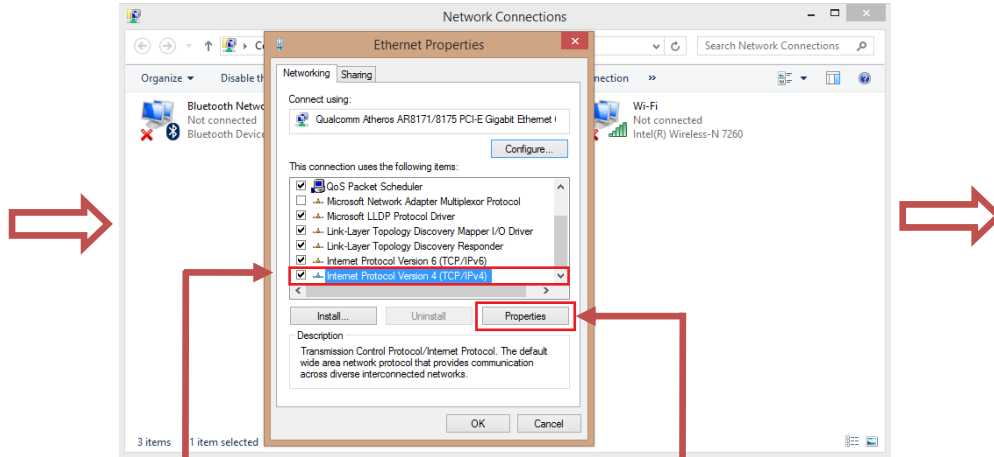
CLICK on "Change
Adapter Settings"



RIGHT-CLICK on the
network adapter

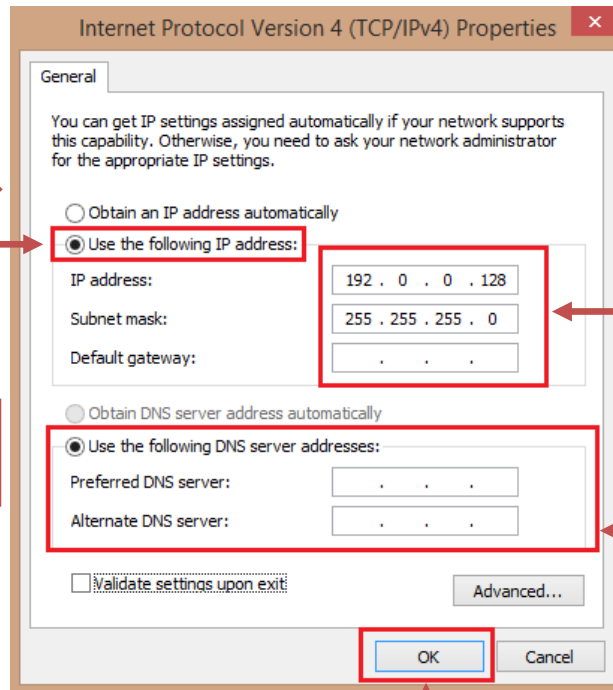
CLICK on
"Properties"

Title:	Change PC's IP ADDRESS				
Date:	8/27/2014	Version:	1.0	Pages	2
Product:	PC Computers				
Action Required:	Information only				



CLICK on
"Internet Protocol Version 4 (TCP/IPv4)"

CLICK on
"Properties"



CLICK on
"Use the following IP Address"

Change the IP information to:

IP: 192.0.0.128
Subnet Mask: 255.255.255.0
Gateway is not needed

DNS is not needed

Press OK