

Quick Start Guide

Turbo HD series DVR
DS-72xxHGHI-SH
DS-73xxHQHI-SH

Note: For more information refer to the complete User Manual located on the CD-ROM

OVERVIEW

1. Overview
2. Main Menu Layout
3. Formatting the HDD
4. Setting up Time/Date
5. Setting up The Network
6. Adding IP cameras
7. Setting up Recording
8. Configuring the Mobile APP
9. Playing Back Recorded Video
10. Making a Backup

Please connect a monitor and a USB mouse (supplied) to the DVR for configuration purposes

1. OVERVIEW

WHAT'S IN THE BOX

THE BOX CONTAINS:



DVR



USB Mouse



IR Remote
(Batteries not included)



Power Cord



Hard Drive Mounting
screws and brackets



Hard Drive
(Preinstalled)



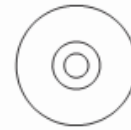
Hard Drive Cables



Rack Mount Ears
(not included in 4-
ch model box)



Quick Start Guide



Manual/Software CD

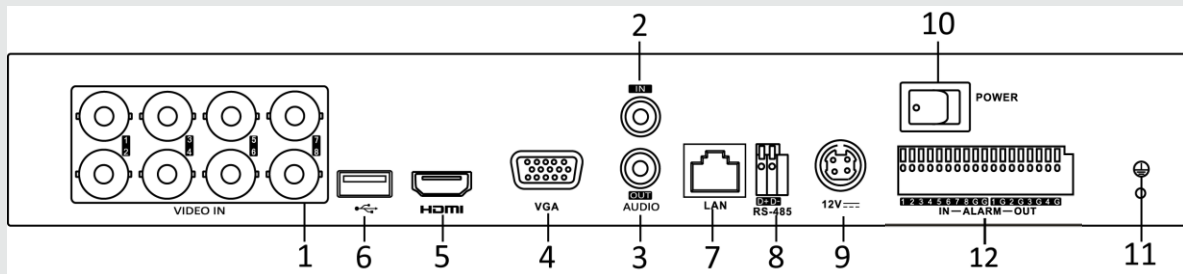
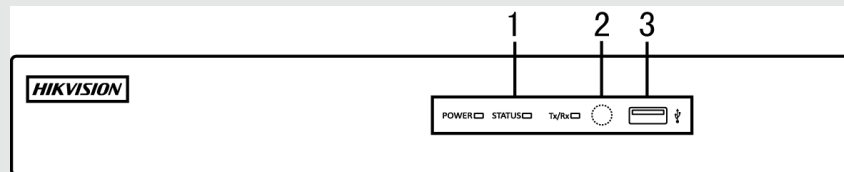
Please note, that the Quick Start Guide is compiled for the latest firmware versions. Please upgrade the firmware of the DVR to the latest version before proceeding. Also note, that the CD may contain outdated manuals and software.

For latest firmware, manual and software downloads please visit:

www.hikvision.com/en/us/download.asp

FRONT AND REAR VIEW

DS-72xxHGHI-SH



REAR VIEW

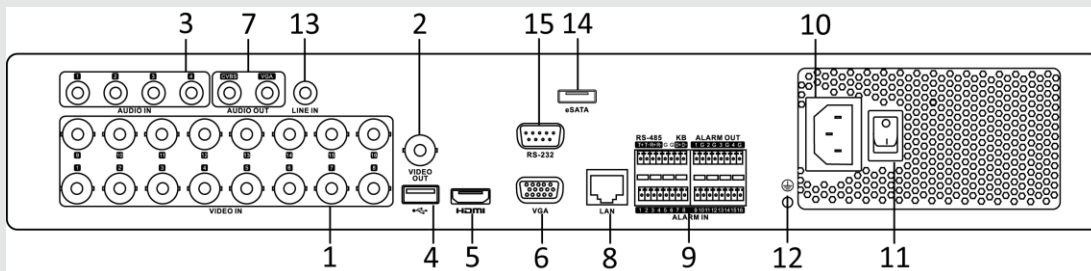
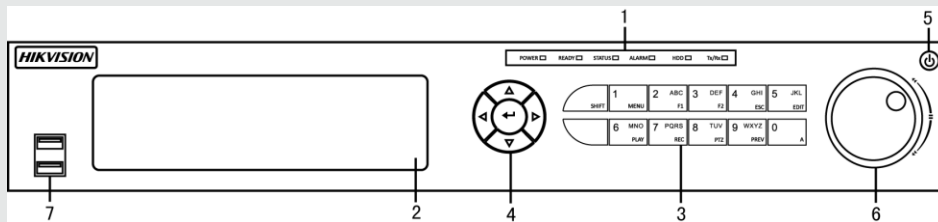
FRONT VIEW

1. Video In
2. Audio In
3. Audio Out
4. VGA output
5. HDMI output
6. USB Interface
7. Network Interface (RJ45)
8. Rs-485 Interface
9. Power Supply Port
10. Power Switch
11. Grounding Screw
12. Alarm In/Out

1. Power, Status and Tx/Rx indicators
2. IR Receiver
3. USB Interface

FRONT AND REAR VIEW

DS-73xxHQHI-SH



REAR VIEW

1. Video In
2. Video Out
3. Audio In
4. USB Interface
5. HDMI output
6. VGA output
7. Audio Out
8. Network Interface
9. RS-485 Interface
10. Power Supply
11. Power Switch
12. GND
13. Line In
14. eSATA
15. RS-232 Interface

FRONT VIEW

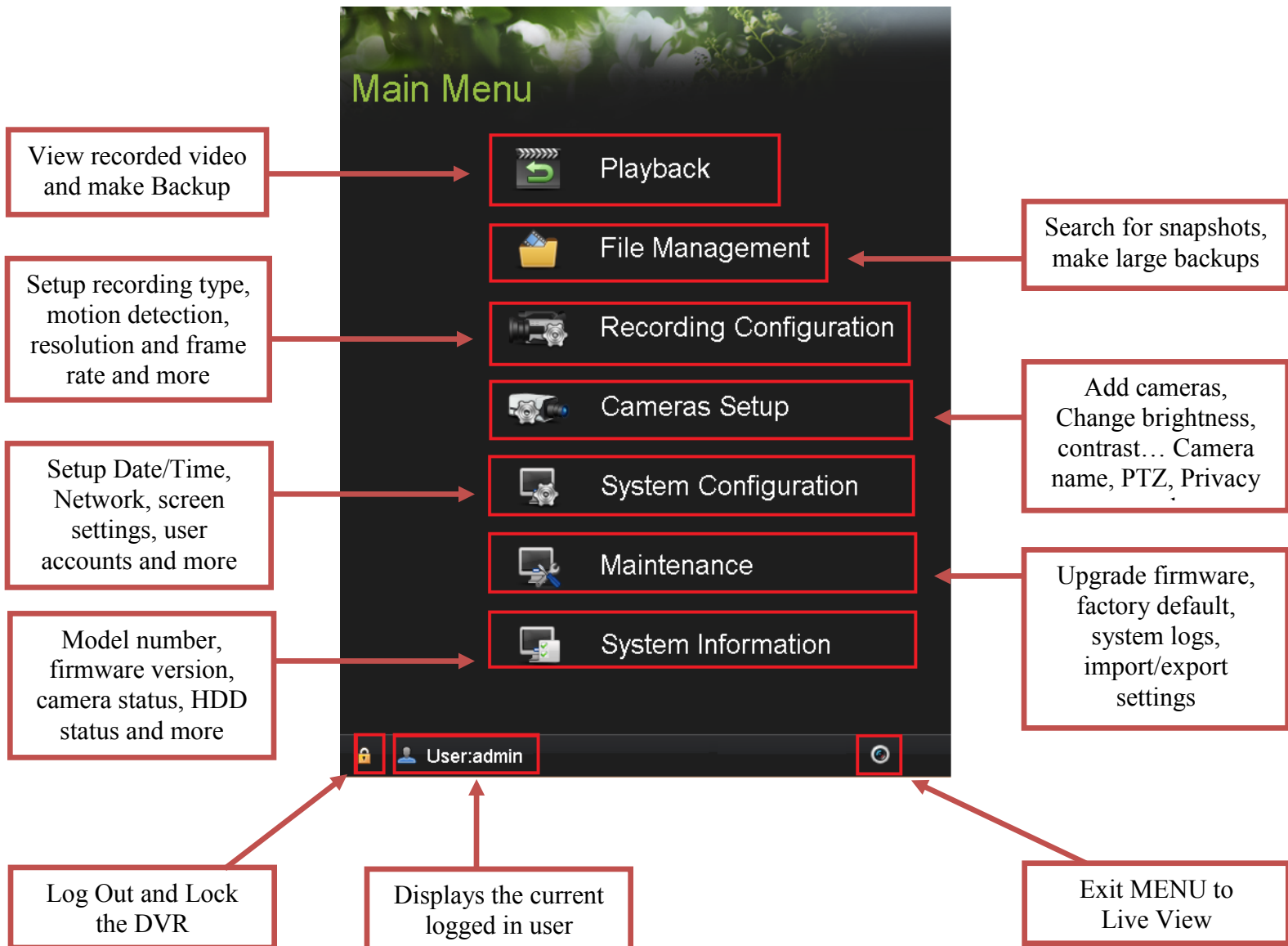
1. Power, Ready, Status, Alarm, HDD And Tx/Rx Indicators
2. DVD-R/W
3. Composite Keys
4. Direction/Enter Keys
5. Power
6. Jog Shuttle Control
7. USB Interface
8. IR Receiver

2. MAIN MENU LAYOUT

MAIN MENU LAYOUT

DEFAULT USERNAME: **admin** DEFAULT PASSWORD: **12345**
(Please note, that the username and password are case sensitive)

IT IS STRONGLY RECOMMENDED TO CHANGE THE DEFAULT PASSWORD



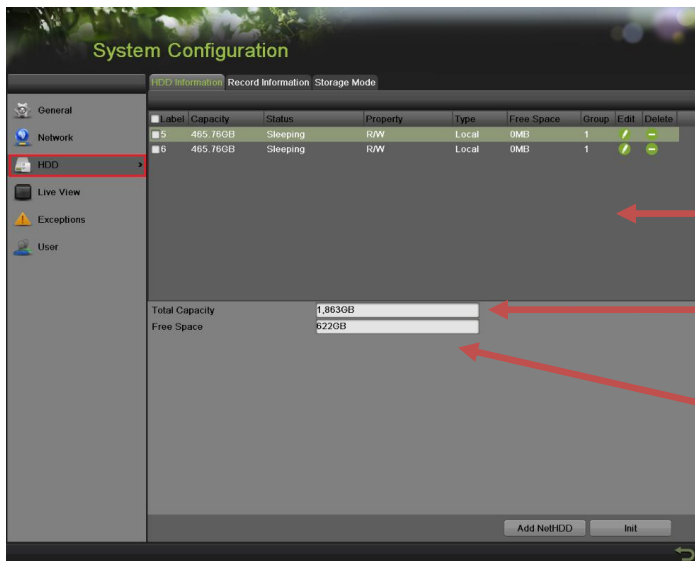
3. FORMATTING THE HARD DRIVE

FORMATTING THE HARD DRIVE

If the Hard Drive (HDD) is not formatted (initialized), the DVR will begin to beep. The beeping will continue until the HDD is formatted. To format the HDD, go to:

“MENU” > “SYSTEM CONFIGURATION” > “HDD”

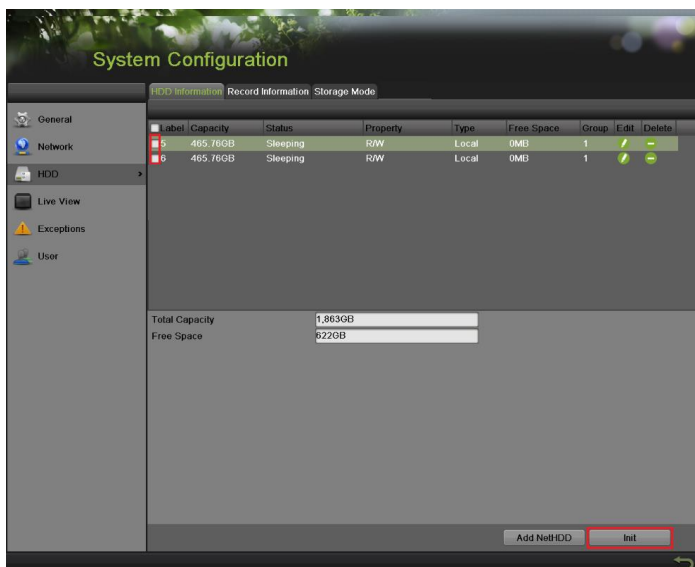
Select the HDDs that need to be formatted, and press “INIT”



List of HDDs

Total HDD Space

Free Space



Please Note:

**Units purchased with HDDs,
already come with formatted
HDDs**

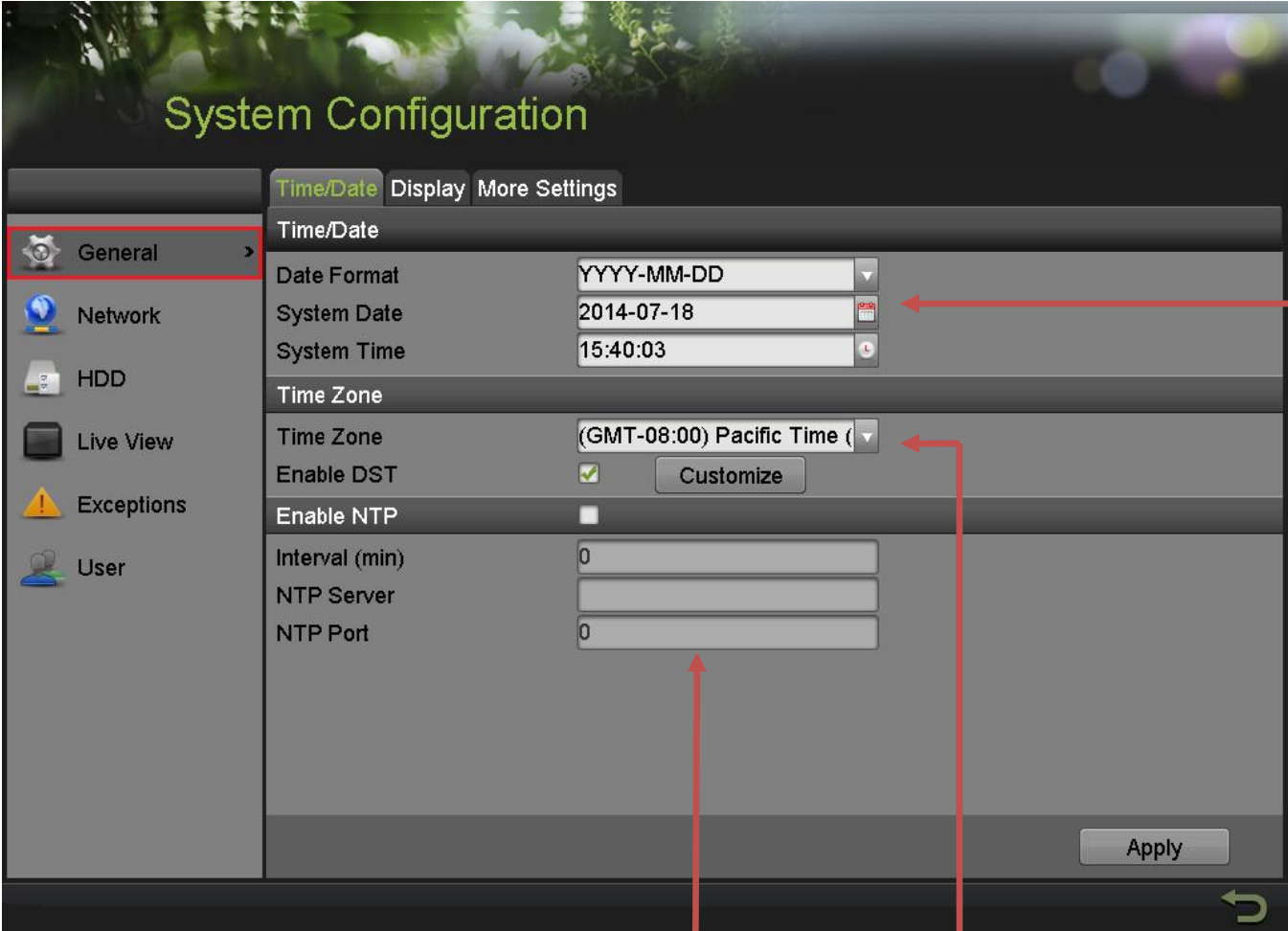
**Formatting the HDDs also erases
the recorded video from the HDDs
(this does not affect the settings).**

4. SETING UP DATE/TIME

DATE AND TIME SETUP

To setup the Time and Date on a DVR, please go to:

“MENU” > “SYSTEM CONFIGURATION” > “GENERAL”



The screenshot displays the 'System Configuration' interface with the 'General' tab selected. The 'Time/Date' section is active, showing the following settings:

- Date Format: YYYY-MM-DD
- System Date: 2014-07-18
- System Time: 15:40:03
- Time Zone: (GMT-08:00) Pacific Time ()
- Enable DST: Customize
- Enable NTP:
- Interval (min): 0
- NTP Server: [Empty field]
- NTP Port: 0

Red arrows point from three callout boxes to specific settings in the interface:

- NTP Settings** points to the 'Enable NTP' checkbox and the 'Interval (min)', 'NTP Server', and 'NTP Port' fields.
- Time Zone and Daylight Savings Time settings** points to the 'Time Zone' dropdown menu and the 'Enable DST' checkbox.
- Date and Time settings** points to the 'Date Format', 'System Date', and 'System Time' fields.

An 'Apply' button is located at the bottom right of the configuration area.

5. SETTING UP THE NETWORK

SETTING UP NETWORK ACCESS

Networking a DVR requires 3 steps:

1. Assign an **IP address, Default Gateway, Subnet Mask, and a DNS server (Please note: DNS, not DDNS)** to the DVR
2. Forward the appropriate ports on the router (**Port Forwarding**).
3. Register **DDNS** (DDNS registration is required only if the public IP address is Dynamic).

To assign an **IP ADDRESS**, go to “**MENU**”>”**SYSTEM CONFIGURATION**”>”**NETWORK**”

General

System Configuration

General DDNS Email SNMP NAT More Settings

General Network HDD Live View Exceptions User

NIC Type 10M/100M/1000M Self-ada

Enable DHCP

IPv4 Address 192.0.0.64 IPv6 Address 1

IPv4 Subnet Mask 255.255.255.0 IPv6 Address 2

IPv4 Default Gateway IPv6 Default Gateway

MTU(Bytes) 1500 MAC Address 00:40:48:bf:e3:2d

DNS Server

Preferred DNS Server

Alternate DNS Server

Refresh Apply

Select NIC Type

Enable DHCP

With DHCP enabled, the router will assign an IP address to the DVR

IP CONFIGURATION

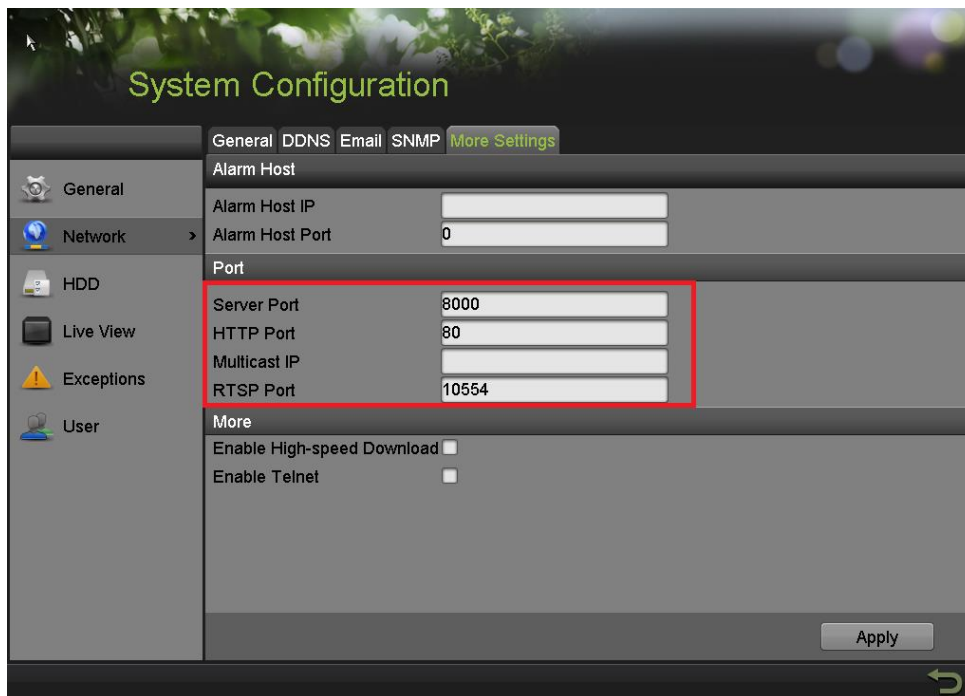
Please note that the DVR's default IP Address is **192.0.0.64**

SETTING UP NETWORK ACCESS

After assigning the IP information, click on the “**MORE SETTINGS**” tab



The “**MORE SETTINGS**” tab contains the ports that need to be forwarded for remote access



The **SERVER PORT** is responsible for the **MOBILE APP** and **CLIENT SOFTWARE** log-in.
The **HTTP PORT** is responsible for **WEB BROWSER** log-in.
The **RTSP PORT** is responsible for **VIDEO/AUDIO STREAMING**.

SETTING UP NETWORK ACCESS

The **HTTP PORT** and the **SERVER PORT** can be changed if desired, in order to avoid conflicts with the **ISP** or the existing network configuration.

PORT FORWARDING

After assigning the IP information to the DVR, connect a computer to the same router that the DVR is connected to (wired connection is recommended, to avoid complications). Log into the **ROUTER**, and proceed with **PORT FORWARDING**.

For **PORT FORWARDING** assistance contact the Internet Service Provider (**ISP**), or the router manufacturer. Also refer to www.portforward.com for port forwarding step by step instructions. Please be aware, that Hikvision USA is not associated with www.portforward.com, and not responsible for any activity between the user and www.portforward.com. Please refrain from downloading any software from the abovementioned website.

Proceed to the “**ROUTERS**” section for step by step instructions.

DDNS SETUP

DDNS registration has been made more user friendly, and takes only a few seconds to complete. The legacy units require user registration on www.hik-online.com. This step is no longer needed.

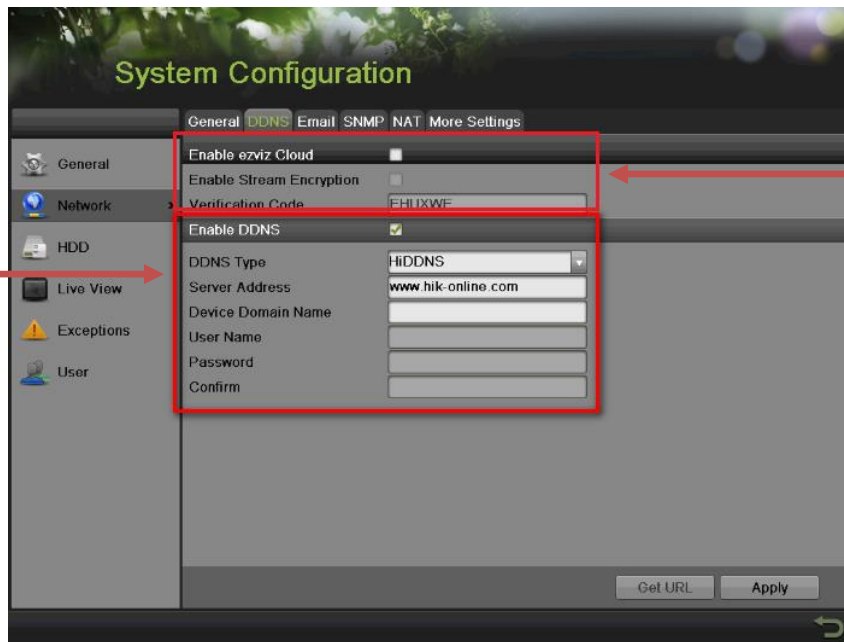
Click on the DDNS tab



In the **DDNS** tab:

- a. Enable DDNS
- b. Change the **DDNS TYPE** to **HiDDNS** (in some cases **HkDDNS**)
- c. Make sure that the **SERVER ADDRESS** is set to www.hik-online.com
- d. Create a **DEVICE DOMAIN NAME** (the domain name **CANNOT** contain **spaces, special characters and/or upper case letters**)

SETTING UP NETWORK ACCESS

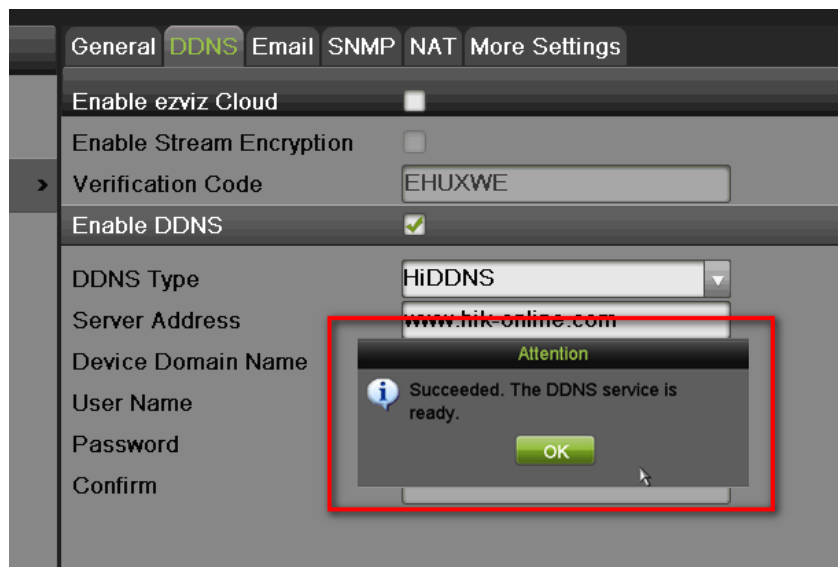


Enable DDNS and
create a DOMAIN
NAME

EZVIZ is used for a
connection through a
secure server.
In this case port
forwarding is not
required.

**Please contact
Technical Support
for detailed
information**

After the changes have been made, presses “APPLY”. A “SUCCESS” message will pop up



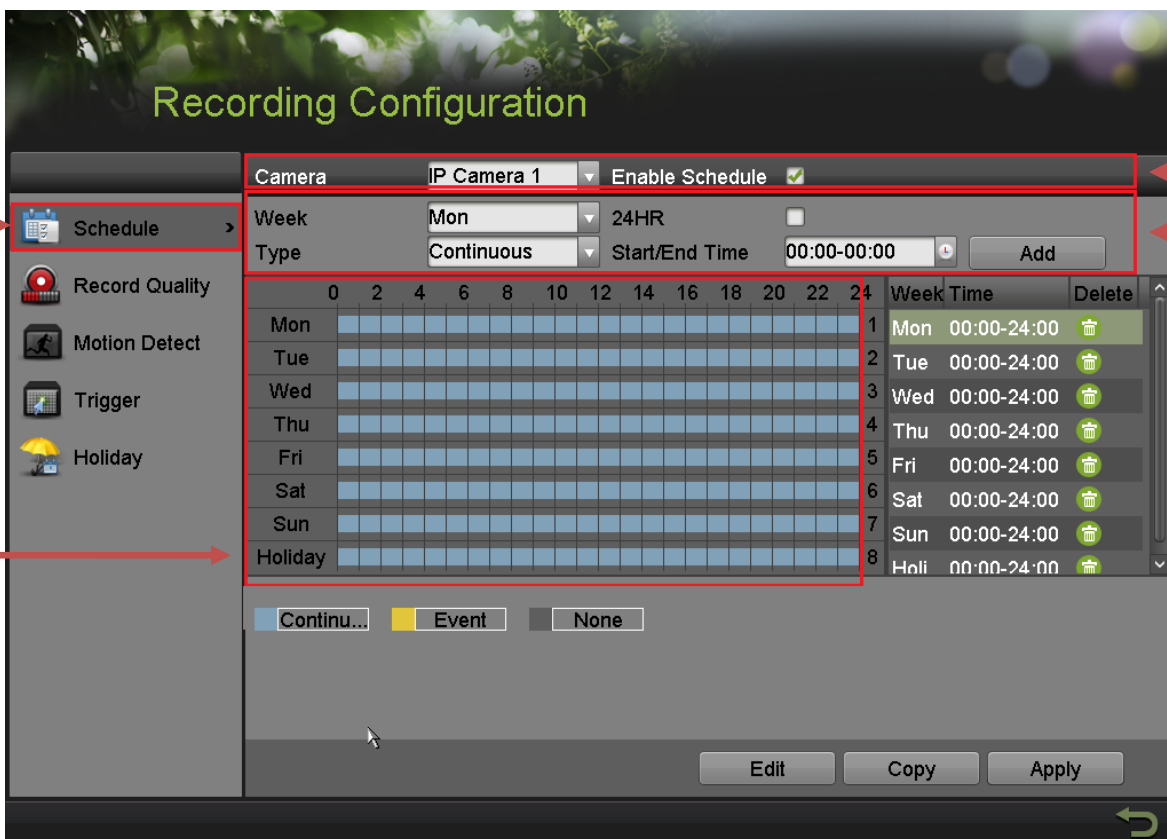
If the Domain Name does not meet the acceptable criteria, and/or is already registered, an error message will appear (The domain name cannot contain upper case characters, begin with a number, spaces, special characters...).

7. SETTING UP RECORDING

SETTING UP RECORDING

Hikvision DVRs are defaulted to **CONTINUOUS RECORDING**.

Please go to: “MENU”>”RECORDING CONFIGURATION”



Setup Recording Schedule
(Continuous/Motion)

The color of the calendar is what constitutes the recording schedule:

- Blue=Continuous**
- Yellow=Event (Motion/Alarm)**
- Grey= No Recording**

This field is used to customize a part of the existing schedule
This can be ignored if setting up motion only recording

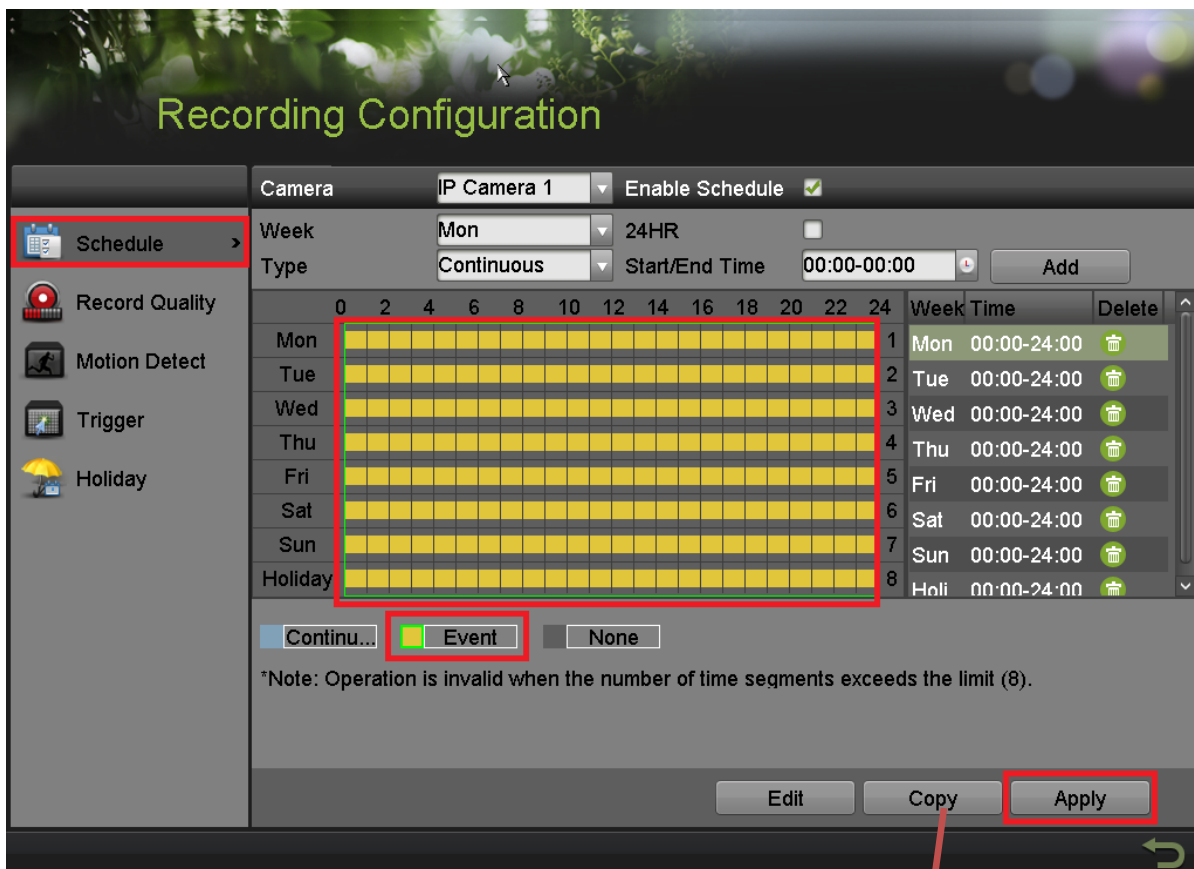
- **Please note:** If **ENABLE SCHEDULE** is not checked, then that camera would not be recording

Select the camera.
Enable/Disable the schedule

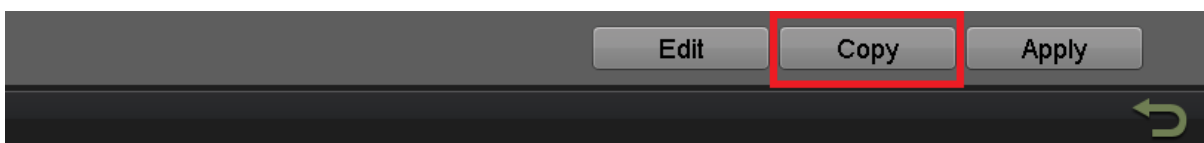
SETTING UP RECORDING

To set the DVR to **MOTION RECORDING**, go to:

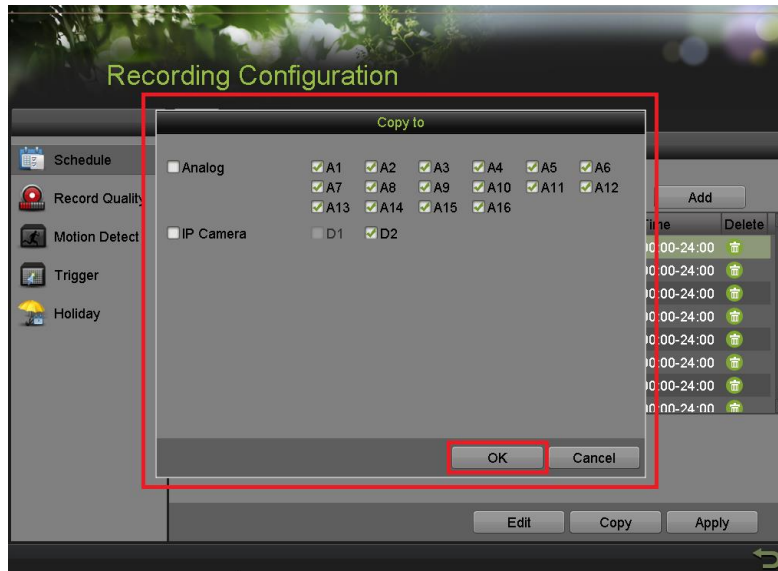
1. “MENU”>”RECORDING CONFIGURATION”
2. Click on the “EVENT” under the calendar (yellow). After this the mouse cursor will change to a **WAND**.
3. Select the calendar, and it will turn **YELLOW** (just like on a computer, click on the top-left corner of the calendar and drag to the bottom-right corner).
4. Press **APPLY**.



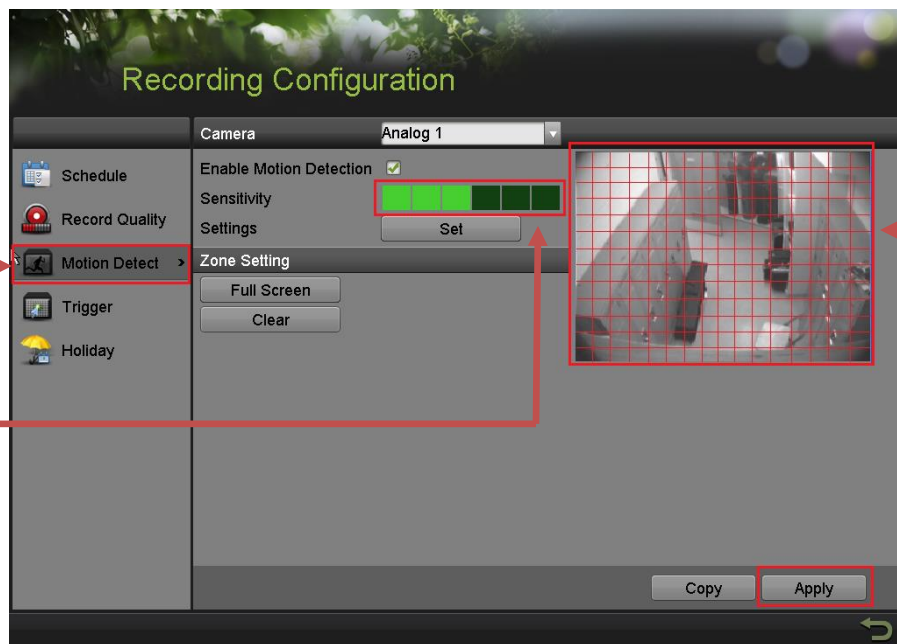
5. Press **COPY** to copy the new schedule to the remaining cameras.



SETTING UP RECORDING



After the recording has been set to “EVENT RECORDING” go to “MOTION DETECT” to set the motion detection for every camera. In this step, the “COPY” option is available only for analog cameras, the IP cameras need to be configured individually.



Motion Detection Setup

Motion Sensitivity
The amount of bright green squares indicates the sensitivity level. (in this picture the sensitivity is set to 3)

Motion Area
The grid indicates the area, where motion will be detected

SETTING UP RECORDING

To set the recording **RESOLUTION/FRAMERATE/BITRATE** settings, please go to:

”RECORD QUALITY” in the **“RECORDING CONFIGURATION”** submenu

The screenshot shows the 'Recording Configuration' window for 'Camera 01(A1)'. The 'Main Stream' tab is selected. The 'Record Quality' menu item is highlighted in the left sidebar. The 'Recording Mode' is set to 'Continuous'. The 'Event' recording mode is also visible. The 'Video Stream' dropdown is set to 'Main Stream'. The 'Recording Time (days)' is set to 0. The 'Restore', 'Copy', 'Apply', and 'Submit' buttons are at the bottom.

Select Main Stream

Record Quality

Select Camera

Continuous
Pertains to live view image as well as continuous recording

Event
Pertains to event recording only (Motion or alarm)

SETTING UP RECORDING

Stream Type allows enable/disable the audio streaming from the cameras (if the camera does not have audio capabilities, then the **Stream Type** will only have **Video** option)

Resolution allows setting of the recording resolution

Bitrate Type allows the DVR to save HDD space when set to **Variable** (Available choices: **Variable** and **Constant**)

Video Quality adjusts picture clarity (**medium setting (3 green squares)** is recommended. Medium setting is the balance between good picture and saving HDD space).

Frame Rate allows setting of the recording frame rate (**12-15 fps** is recommended to save HDD space and not to have a “choppy” image)

Max Bitrate Mode allows choosing between preset bitrate values and customizing the values (**General** setting is recommended)

Max Bitrate (KBPS) is the chosen bitrate for streaming the video

Max Bitrate Recommended is the DVR’s recommended bitrate according to the parameters set above.

Record Audio allows turning the audio recording on or off (for IPC, this option is only available if the camera has a microphone connected to it)

Video Stream allows changing the recording stream between **Main Stream** and **Sub Stream** (this step requires a restart).

Input Resolution shows the resolution of video stream from camera.

Recording Time(days) shows how much time left for recording, based on current HDD volume and recording paramters.

Please refer to the table below for recommended recording parameters

Resolution	Video Quality	Frame Rate (FPS)	Bitrate (KBPS)
320x240 (QVGA)	Medium (3 squares)	12-15	207
352x240 (CIF)	Medium (3 squares)	12-15	384
640x480 (VGA)	Medium (3 squares)	12-15	768
704x480 (4CIF)	Medium (3 squares)	12-15	1024
1280x720 (720P)	Medium (3 squares)	12-15	2048
1280x960 (960P)	Medium (3 squares)	12-15	2048
1600x1200 (2MP)	Medium (3 squares)	12-15	2560
1920x1080 (1080P)	Medium (3 squares)	12-15	3072

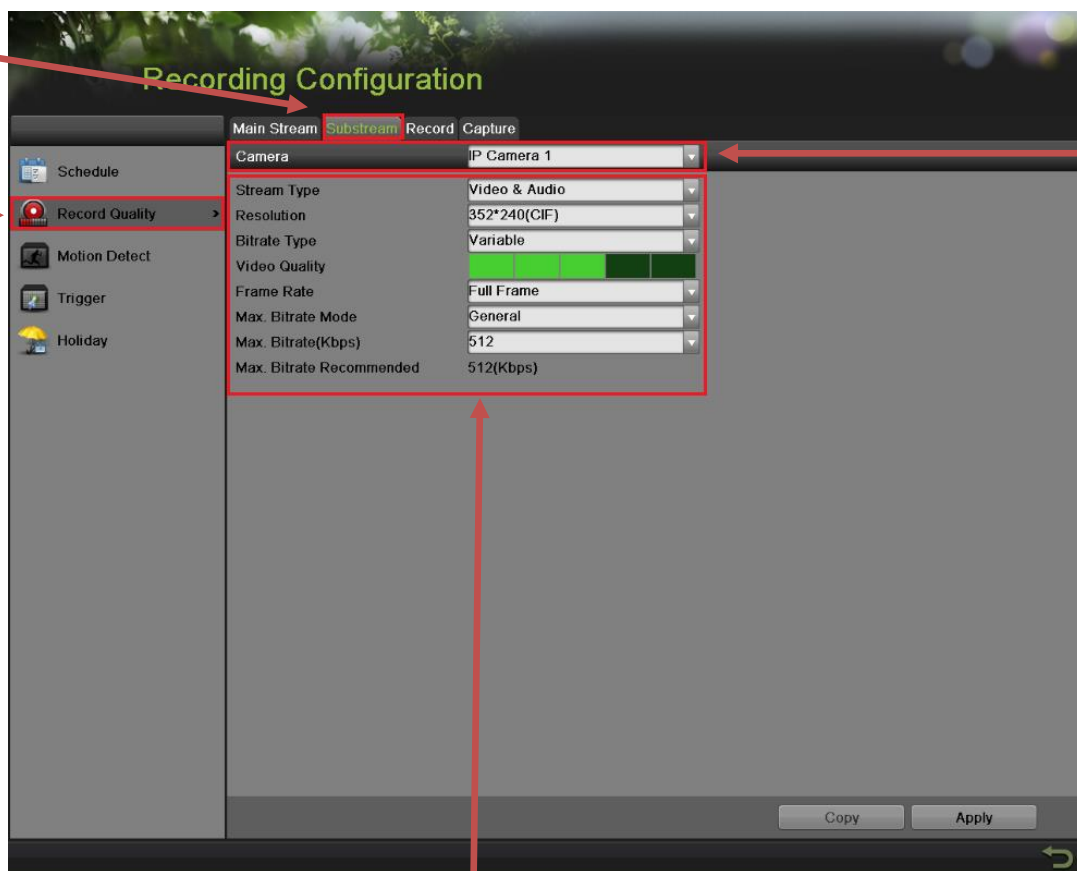
SETTING UP RECORDING

Last step in the recording setup is setting up the **Sub Stream**.

The **Sub Stream** is used for streaming on mobile devices, as well as displaying multiple cameras on the local output

Select
Sub
Stream

Record
Quality



Unlike Main Stream,
Sub Stream can only go up to 4CIF

Select
Camera

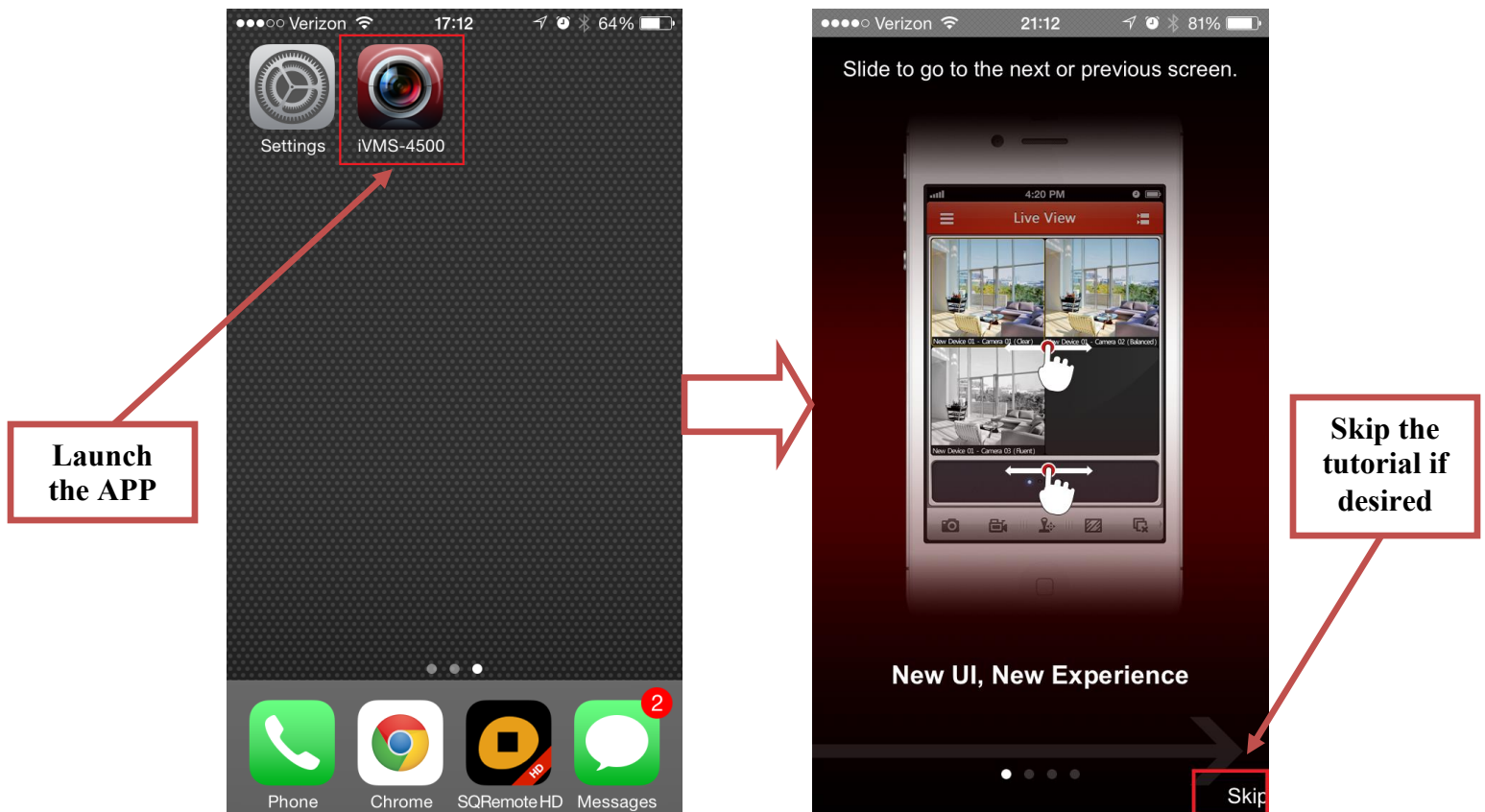
- **Please note:** If the upload speed is not sufficient, consider lowering the frame rate/bitrate/resolution for more fluent mobile app viewing.

8. CONFIGURING THE MOBILE APP

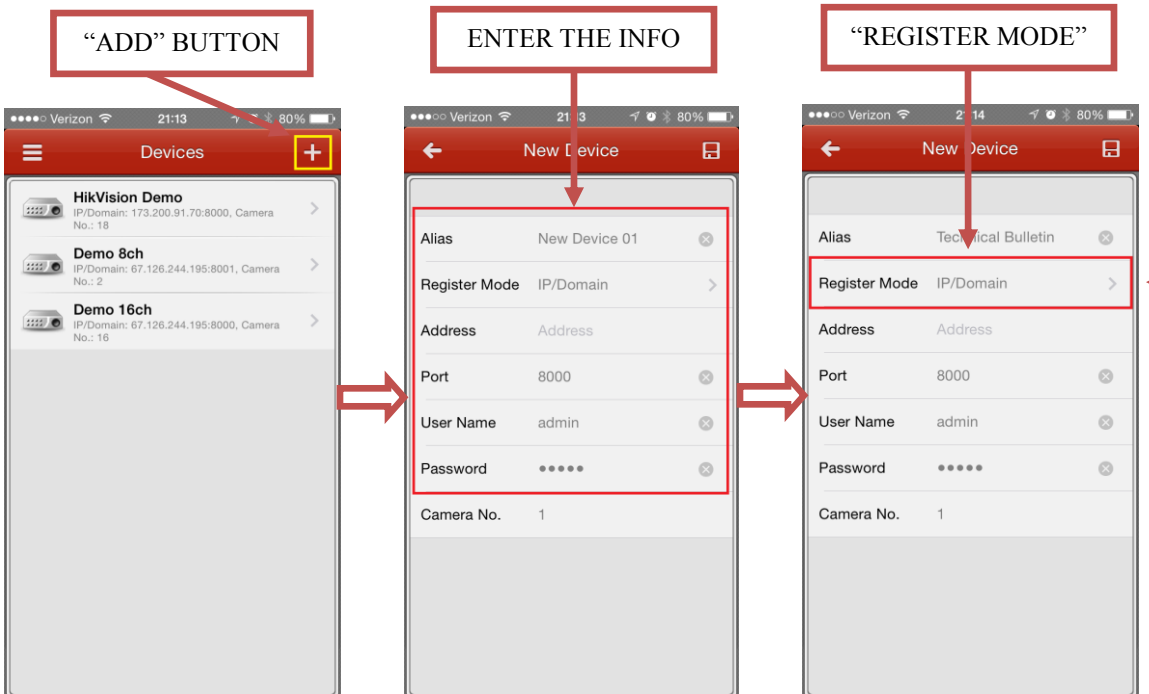
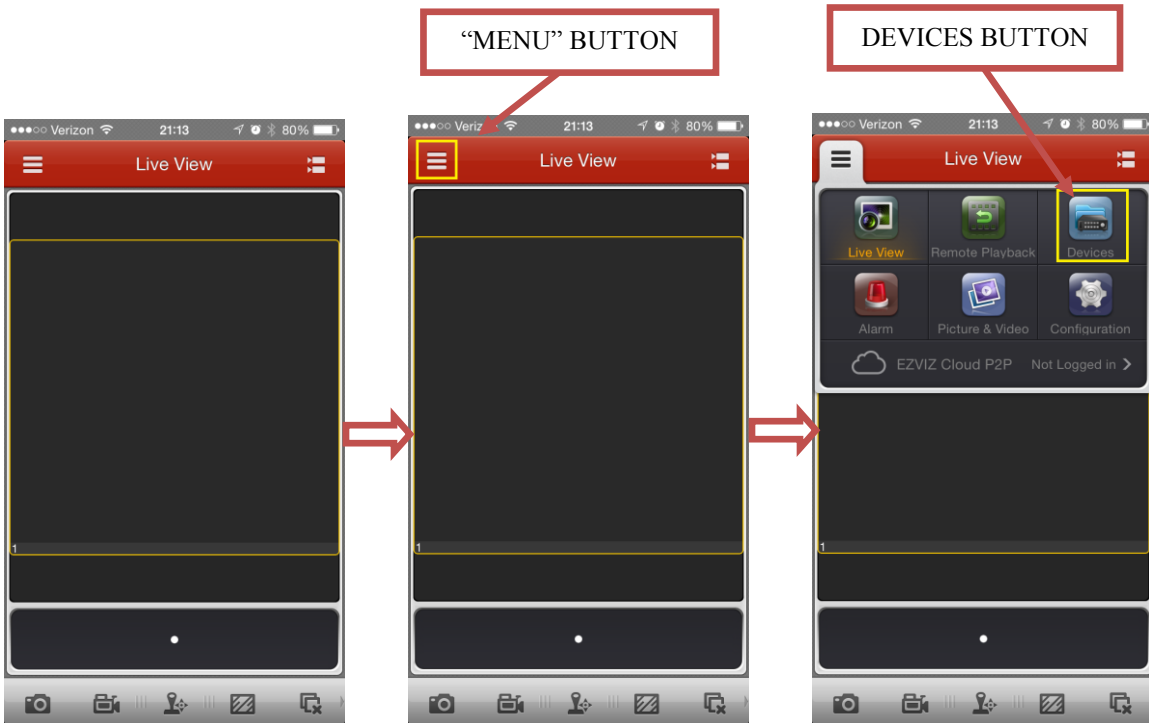
CONFIGURING THE MOBILE APP

All Hikvision DVRs, NVRs and IP Cameras can be accessed with **iVMS-4500 application**. The APP can be downloaded from the **APP STORE (iPhone/iPad)**, **PLAYSTORE (Android)**. The app is also available for **WINDOWS MOBILE** devices (Nokia Phones and tablets).

Download the app from the appropriate place and launch it. When the APP is launched for the first time, a tutorial screen will be displayed, and it can be easily skipped.



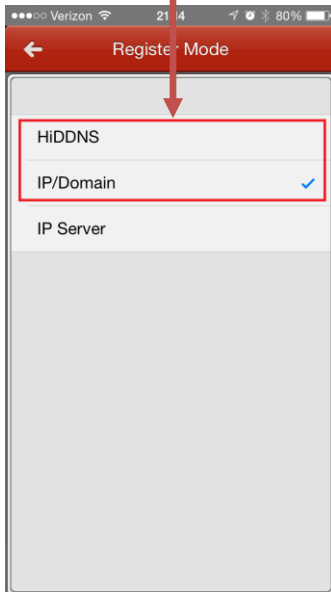
CONFIGURING THE MOBILE APP



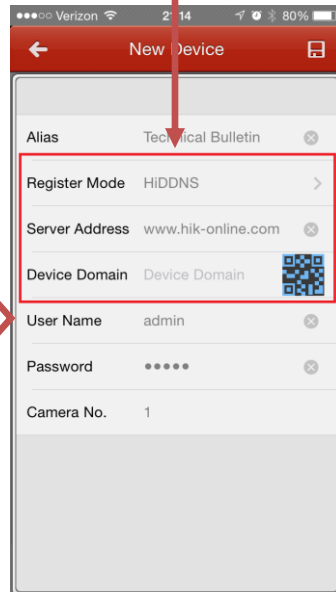
Please Note:
If free Hikvision DDNS is configured for the device, change the “REGISTER MODE” to HiDDNS

CONFIGURING THE MOBILE APP

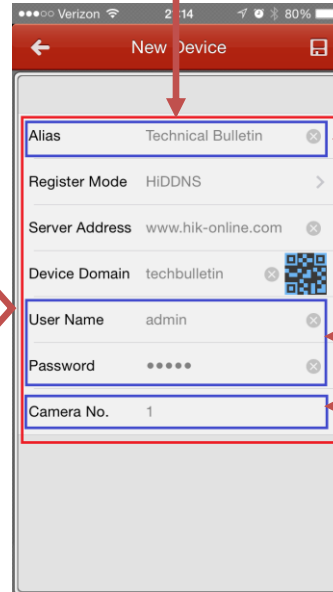
CHANGE THE MODE



ENTER "DEVICE DOMAIN"



COMPLETE THE PAGE

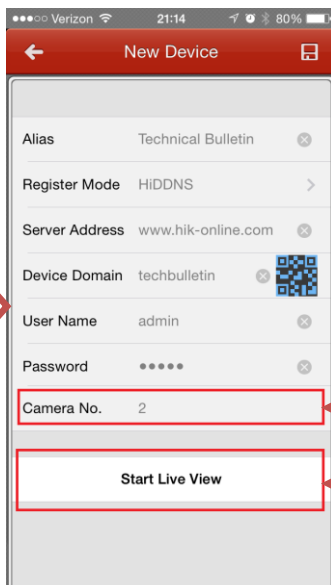
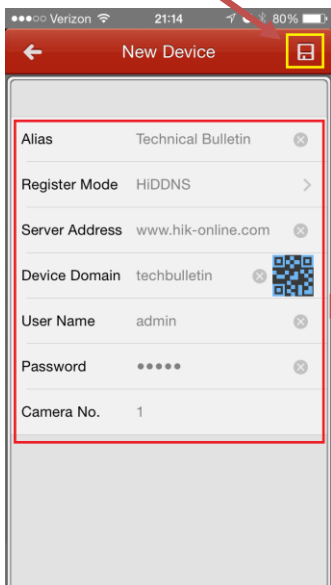


Please Note:
Alias is just a friendly name for the address book (i.e. Home/Office)

User Name and Password are the DVR's/NVR's username and password

Please note:
The "CAMERA NUMBER" is set to 1.
After saving the changes, the number will resemble the correct amount of cameras

"SAVE" BUTTON



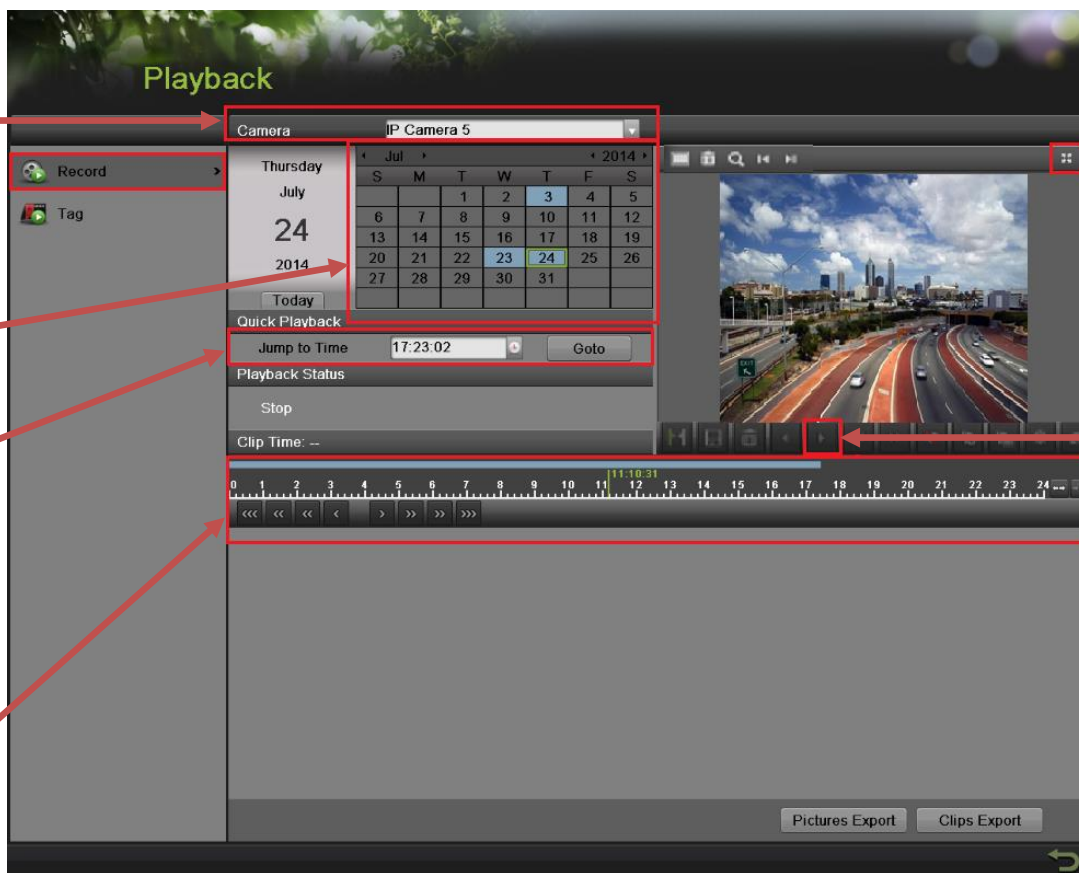
Please note:
The "CAMERA NUMBER" has changed to the correct number of cameras connected to the DVR/NVR

Please note:
"START LIVE VIEW" button will begin live camera stream

9. PLAYING BACK RECORDED VIDEO

PLAYING BACK RECORDED VIDEO

To initiate a **PLAYBACK**, go to “MENU”>”PLAYBACK”.

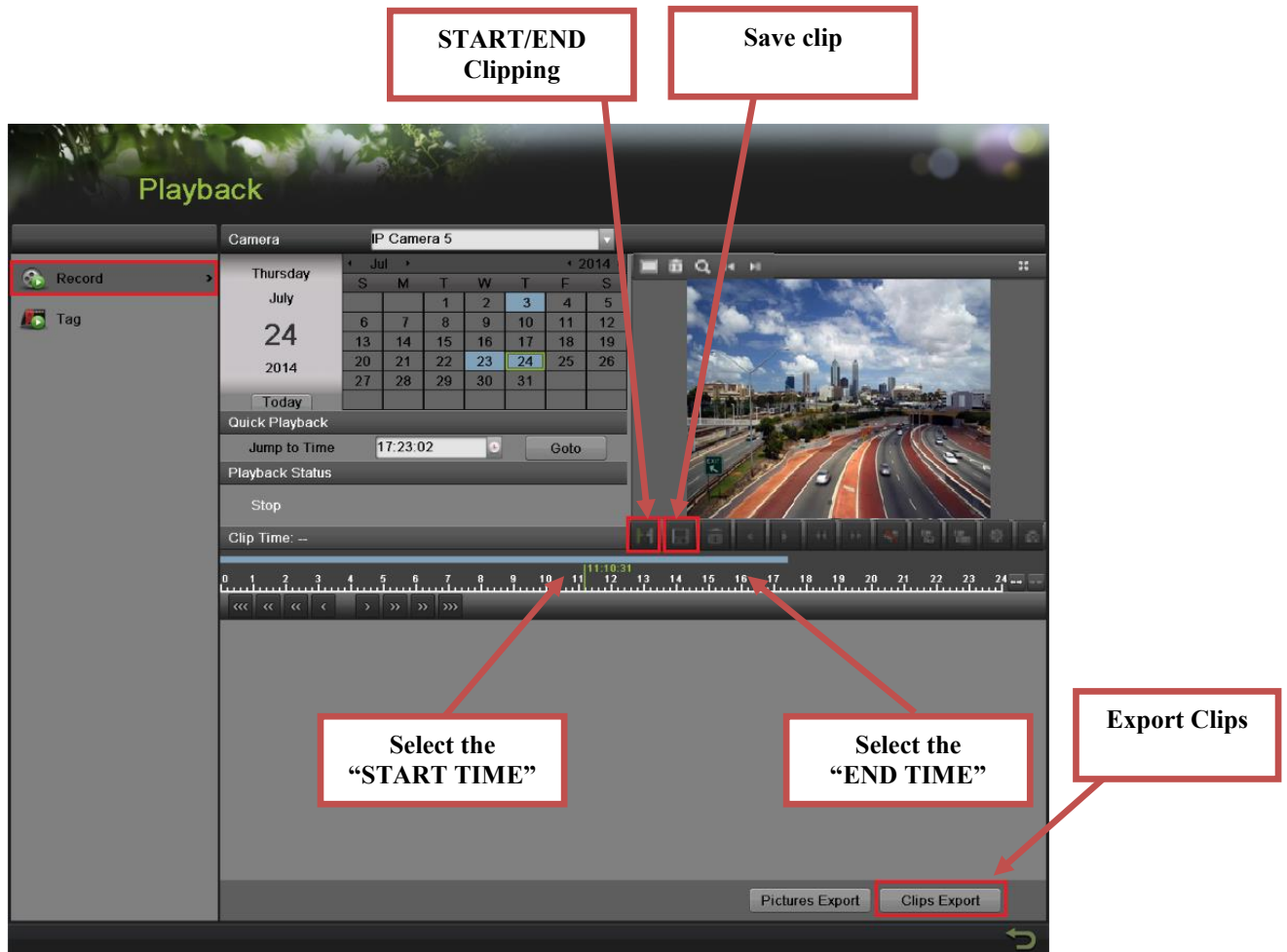


Steps to initiate **PLAYBACK**

1. Select the desired camera
2. Select the desired date. The days that contain recording will be highlighted on the calendar
3. Select the desired time using the Timeline or “Jump to Time” feature.
4. Press “PLAY”

10. MAKING A BACKUP

MAKING A BACKUP

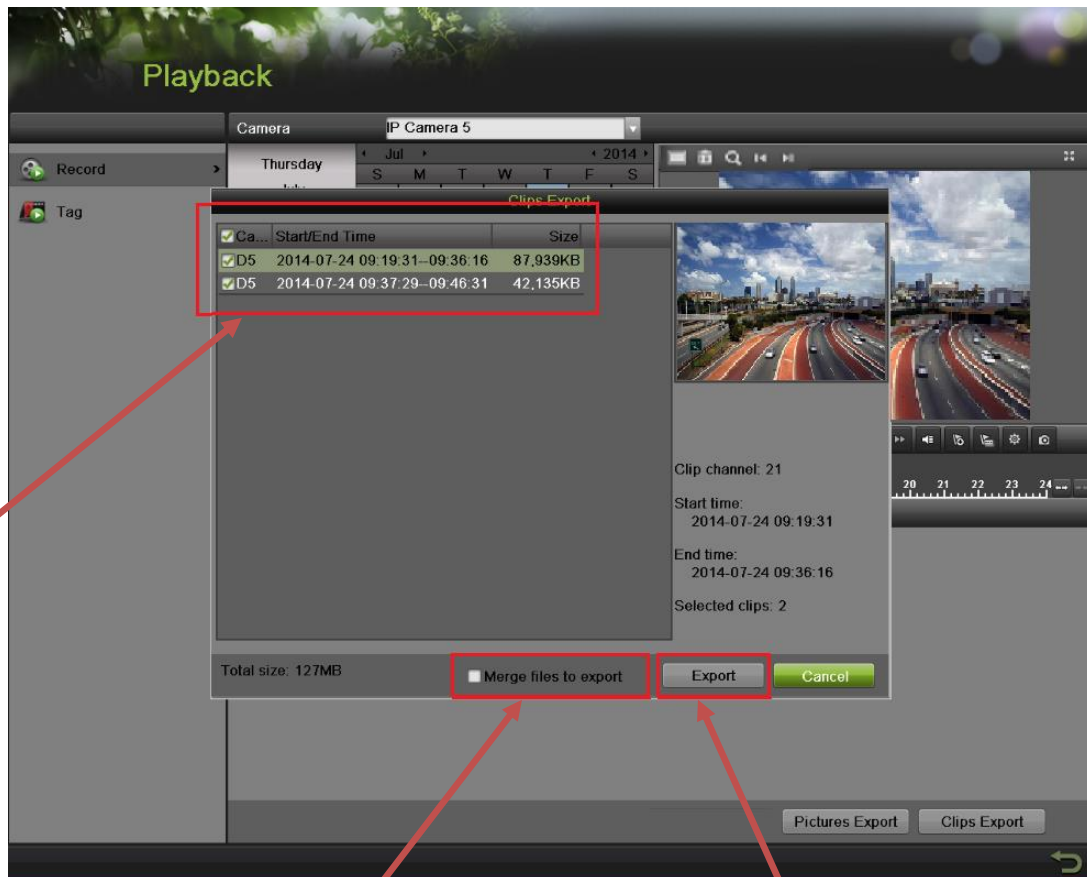


Steps to make a **BACKUP** of recorded video

1. Insert a USB FLASH Drive or a USB HDD into an available USB Port
2. Go to **"MENU">"PLAYBACK"**
3. Select the DATE and beginning time of the incident
4. Click **"START CLIPPING"**
5. Select the ending time of the incident
6. Click **"END CLIPPING"** (Same button as "Start Clipping")
7. Click **"SAVE CLIP"**
8. Repeat steps 1-7 as many times as required
9. Click **"CLIPS EXPORT"**

MAKING A BACKUP

After pressing “CLIPS EXPORT” a new window opens up containing all saved clips.



Select the desired clips

If selected, multiple clips created from the same camera will be stitched together

EXPORT THE CLIPS TO USB DEVICE

10. Select the desired clips
11. Press “EXPORT”
12. After the backup is complete, simply remove the USB FLASH Drive or the USB HDD.