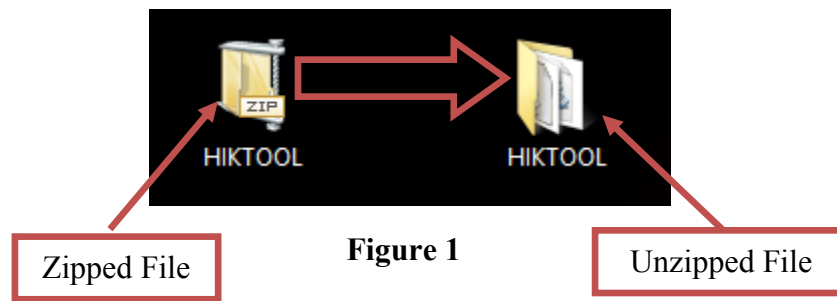


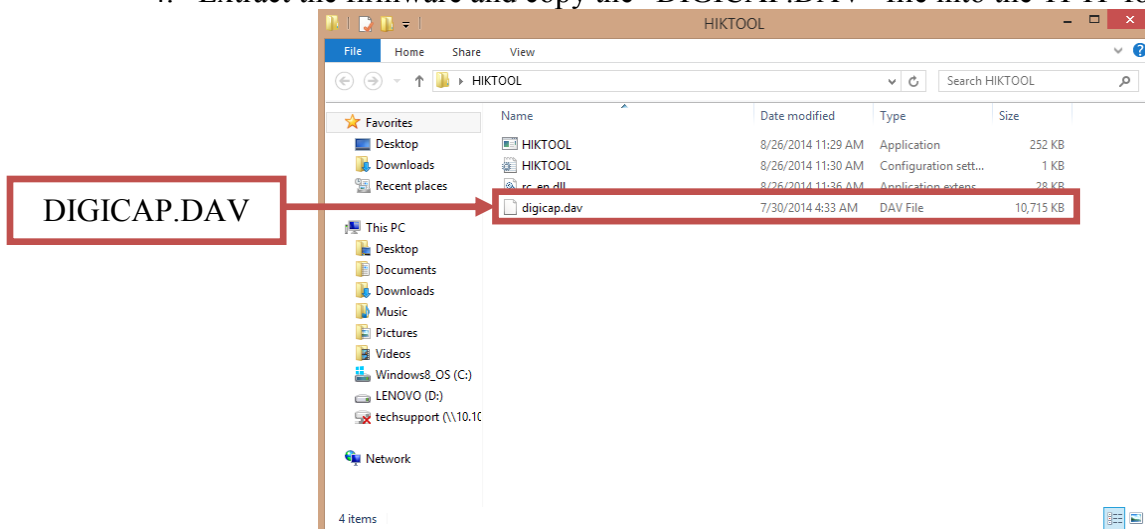
Title:	IP Camera Automatic Firmware Upgrade				
Date:	8/27/2014	Version:	1.0	Pages	5
Product:	PRO and VALUE Series IP Cameras				
Action Required:	Information only				

To flush the firmware on a HikVision Camera (PRO and VALUE series):

1. Download the HIKTOOL software from the link below:
<https://www.dropbox.com/s/jw07or0uuakljqu/HIKTOOL.zip?dl=0>
2. Download the appropriate firmware for the NVR from:
http://www.hikvision.com/en/us/download_more.asp?id=1353
3. Extract the TFTP Server software onto the DESKTOP (Figure 1).

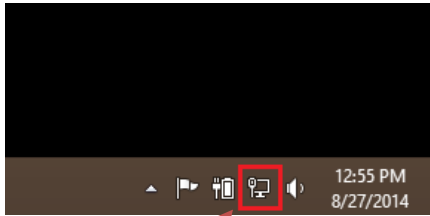


4. Extract the firmware and copy the “DIGICAP.DAV” file into the TFTP folder

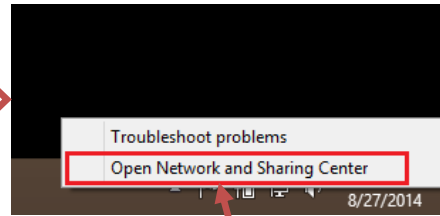


5. Manually change the IP address of the computer to **192.0.0.128** (Figure 3).

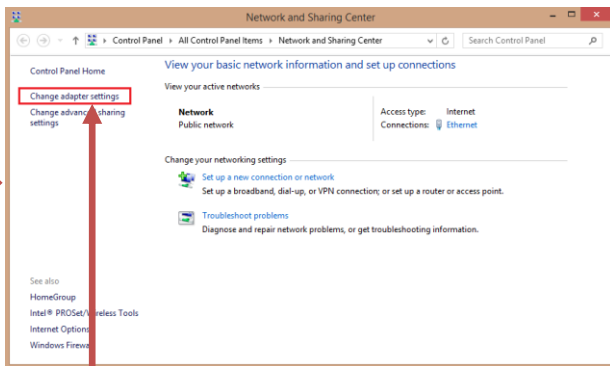
Title:	IP Camera Automatic Firmware Upgrade				
Date:	8/27/2014	Version:	1.0	Pages	5
Product:	PRO and VALUE Series IP Cameras				
Action Required:	Information only				



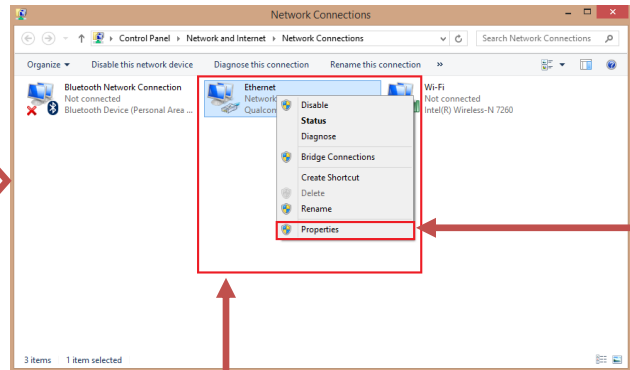
RIGHT-CLICK on
“Network Connections”



CLICK on “Open Network
and Sharing Center”



CLICK on “Change
Adapter Settings”

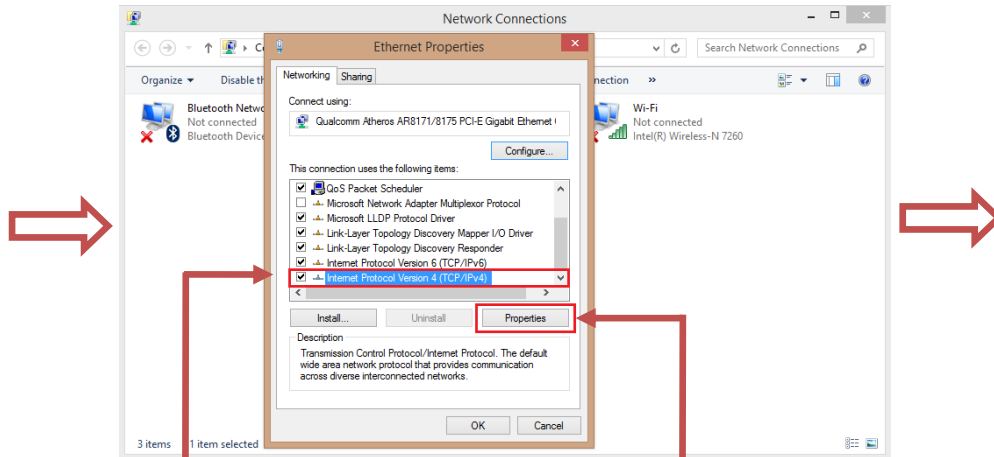


RIGHT-CLICK on the
network adapter

CLICK on
“Properties”

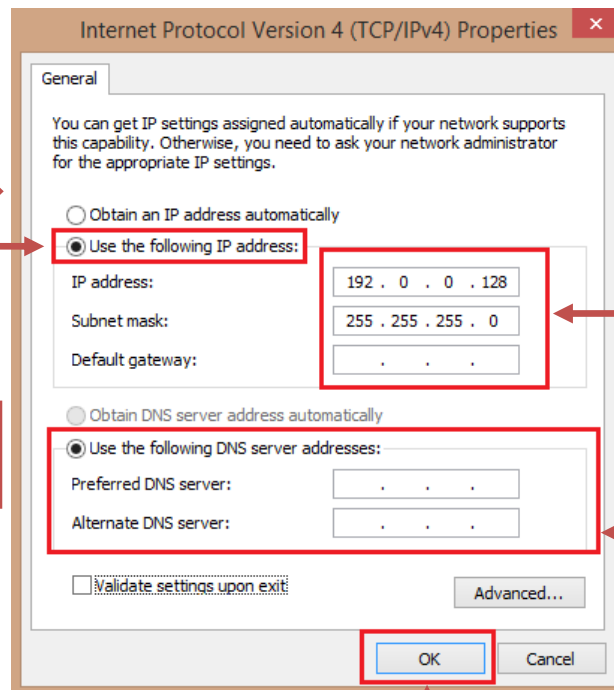
Figure 3 (Continues on the next page)

Title:	IP Camera Automatic Firmware Upgrade				
Date:	8/27/2014	Version:	1.0	Pages	5
Product:	PRO and VALUE Series IP Cameras				
Action Required:	Information only				



CLICK on
“Internet Protocol Version 4 (TCP/IPv4)”

CLICK on
“Properties”



CLICK on
“Use the following IP Address”

Change the IP information to:

IP: 192.0.0.128
Subnet Mask: 255.255.255.0
Gateway is not needed

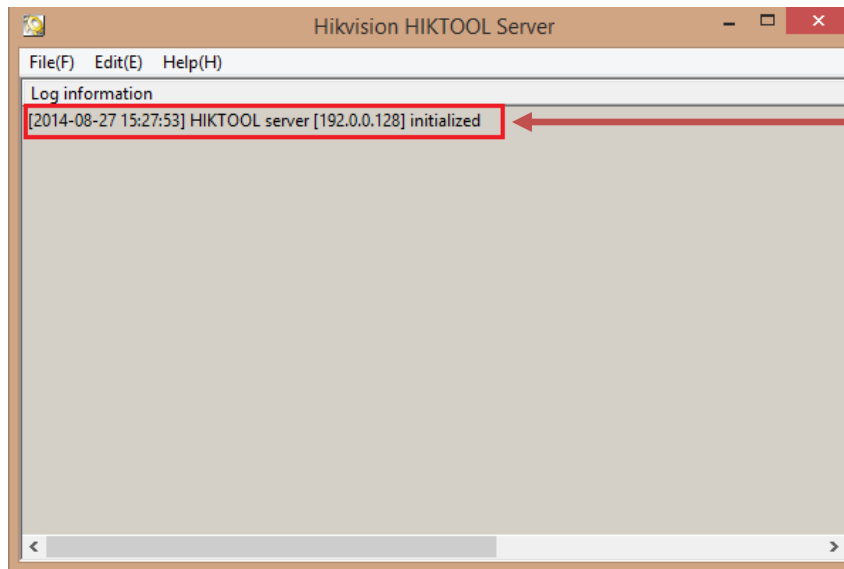
DNS is not needed

Press OK

Figure 3

Title:	IP Camera Automatic Firmware Upgrade				
Date:	8/27/2014	Version:	1.0	Pages	5
Product:	PRO and VALUE Series IP Cameras				
Action Required:	Information only				

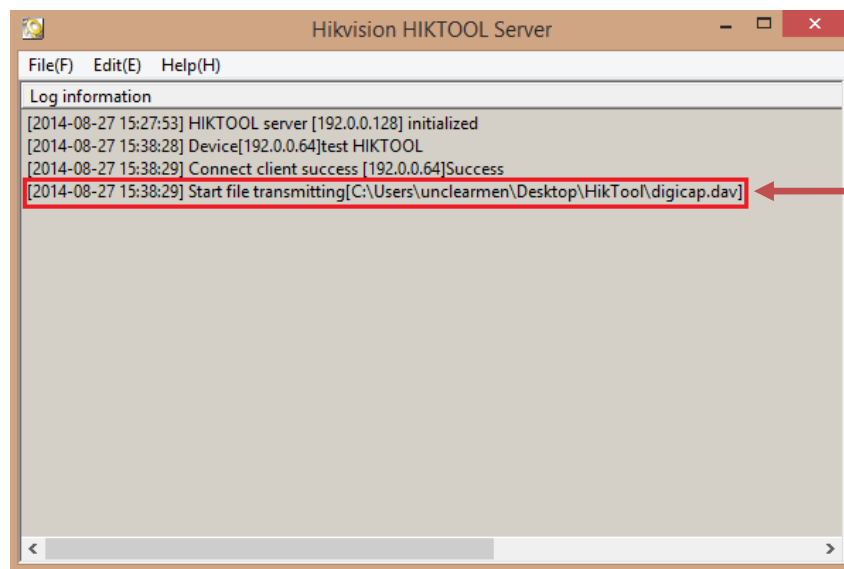
After the computer's IP address has been changed to **192.0.0.128**, connect the camera to the computer's network port using a regular network cable (no need to use a crossover cable. Power the camera either with a POE Injector or 12VDC Power Supply). Launch the HIKTOOL software. The following window will come up (Figure 4).



Please note:
The software states the **192.0.0.128** IP address

Figure 4

After the window comes up, power down the camera. Wait 30 seconds and power the camera back up. After a few split seconds the file transmission will begin (Figure 5).



File transmission starts

Figure 5

Title:	IP Camera Automatic Firmware Upgrade				
Date:	8/27/2014	Version:	1.0	Pages	5
Product:	PRO and VALUE Series IP Cameras				
Action Required:	Information only				

Several seconds later the file transmission will be completed (Figure 6).

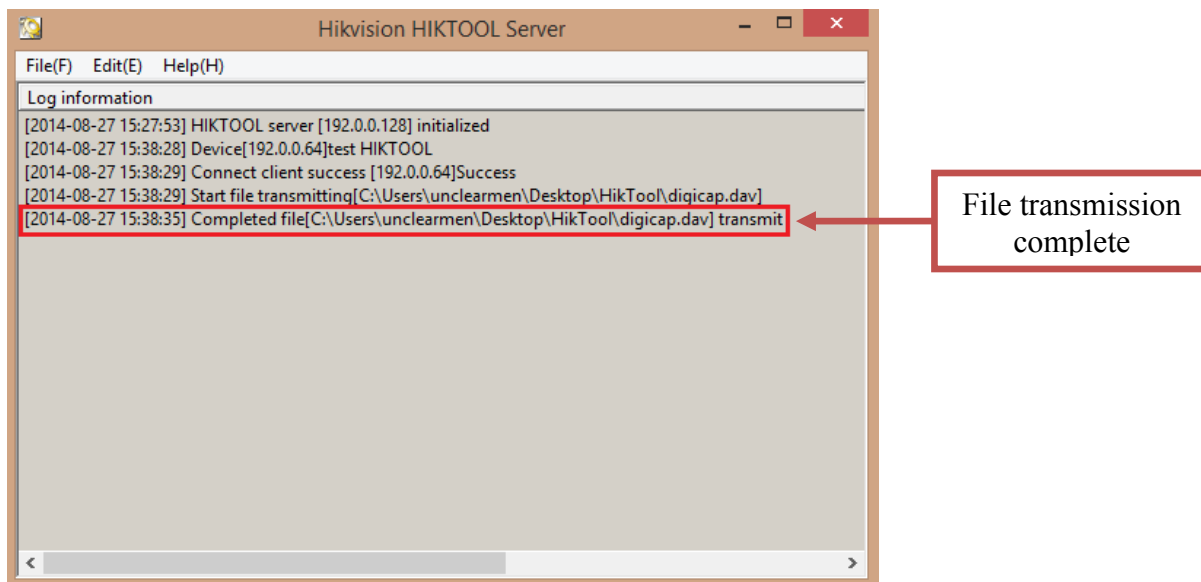


Figure 6

After the file transmission is complete, the camera will need up to 3 minutes to install the firmware. As soon as the firmware is installed, the camera will turn on, display the live view image and will be accessible on the network.